



Coeur d'Alene

CITY COUNCIL MEETING

November 16, 2010

MEMBERS OF THE CITY COUNCIL:

Sandi Bloem, Mayor

Councilmen Edinger, Goodlander, McEvers, Bruning, Hassell, Kennedy

CONSENT CALENDAR

**MINUTES OF A REGULAR MEETING OF THE CITY
COUNCIL OF THE CITY OF COEUR D'ALENE, IDAHO,
HELD AT THE LIBRARY COMMUNITY ROOM
November 2, 2010**

The Mayor and Council of the City of Coeur d'Alene met in a regular session of said Council at the Coeur d'Alene City Library Community Room November 2, 2010 at 6:00 p.m., there being present upon roll call the following members:

Sandi Bloem, Mayor

Mike Kennedy)	Members of Council Present
A. J. Al Hassell, III)	
John Bruning)	
Deanna Goodlander)	
Woody McEvers)	

Loren Ron Edinger)	Members of Council Absent
-------------------	---	---------------------------

CALL TO ORDER: The meeting was called to order by Mayor Bloem.

INVOCATION: The invocation was led by Pastor Dick Hege, Coeur d'Alene Bible Church.

PLEDGE OF ALLEGIANCE: The pledge of allegiance was led by Councilman Kennedy.

PRESENTATION – ROAD SCHOLAR CERTIFICATES: Bruce Drewes from Idaho T-2 LTAC presented Aman Sterling and Eric Killen “Road Scholar” certificates for completing the required courses.

PROCLAMATION – “HOMELESS AWARENESS WEEK”: Councilman Bruning on behalf of Mayor Bloem read the proclamation declaring the week of Nov. 13-19th as “Homeless Awareness Week”. Jeff Conroy from St. Vincent DePaul accepted the proclamation.

PRESENTATION – ENGINEERING SERVICES: Engineering Services Director Gordon Dobler presented a power point review of the activities of the city’s Engineering Services Department.

PUBLIC COMMENTS:

TRAFFIC CIRCLES: Karen Larson, 333 Park Drive, spoke in opposition to a proposed traffic circle at the intersection of Park Avenue and Mullan Avenue.

WATER RIGHTS TRADE REQUEST: Bev Twillman, 15143 S. Raspberry Rd, Harrison, Idaho, spoke in opposition to the City proceeding with negotiations with Powderhorn Ranch Development regarding their water trade request.

GOVERNMENT WAY OVERPASSES/WATER RIGHTS TRADE REQUEST: Wes Hanson, 2725 W. Carter Lane, requested Council consider pedestrian overpasses along Government Way. He also believes the City would be in error to negotiate water rights with Powderhorn Development until the annexation issue with Harrison is settled.

CITIZEN COMPLAINT: Elizabeth Reese, 2806 N. Francis Street, spoke about harassment from her neighbor Mr. Carey Clawson who repeatedly calls the Police Department and Animal Control. She also made complaints about how she and her husband have been mistreated by Officer Kelly and

believes that Officer Kelly went out of his way to give preferential treatment to Mr. Clawson.

WATER RIGHTS TRADE REQUEST: Kathleen O'Connor, 408 Sherman Ave., representing Kootenai Environmental Alliance, spoke in opposition to the City negotiating with Powderhorn Ranch for a water rights trade.

CONSENT CALENDAR: Motion by Hassell, seconded by Kennedy to remove Item 4 from the Consent Calendar. Motion carried.

Motion by Hassell, seconded by Bruning to approve the Consent Calendar as presented.

1. Approval of minutes for October 19, 25, 2010.
2. Setting the General Services Committee and the Public Works Committee meetings for Monday, November 8th at 12:00 noon and 4:00 p.m. respectively.
3. RESOLUTION 10-043: A RESOLUTION OF THE CITY OF COEUR D'ALENE, KOOTENAI COUNTY, IDAHO AUTHORIZING THE BELOW MENTIONED CONTRACTS AND OTHER ACTIONS OF THE CITY OF COEUR D'ALENE INCLUDING APPROVING AN AGREEMENT WITH BBC RESEARCH & CONSULTING, INC. FOR HOUSING NEEDS ASSESSMENT AND ANALYSIS; APPROVING S-6-05 – FINAL PLAT APPROVAL WITH MAINTENANCE/WARRANTY AGREEMENT FOR COEUR D' ALENE PLACE, 17TH ADDITION; BID AWARD AND CONTRACT WITH CMEC, INC. FOR WWTP SECOND CLARIFIER NO. 2 COATING REFURBISHMENT; AND APPROVING CHANGE ORDER NO. 1 WITH THORCO, INC. FOR WWTP TO CITY HALL FIBER CONNECTION.
4. ~~Authorizing staff to proceed with negotiations of a water rights trade request.~~
5. Approval of beer/wine license for Handy Mart II at 8100 N. 4th
6. S-3-07 – Final plat approval for Sorbonne, 1st Addition
7. Declaring certain vehicles as surplus and authorizing staff to sell at auction.
8. SS-7-10 – Final plat approval for East Linden Professional Office Building Condominiums.

ROLL CALL: Hassell, Aye; Goodlander, Aye; Kennedy, Aye; McEvers, Aye; Bruning, Aye.
Motion carried.

WATER RIGHTS TRADE REQUEST: Motion by Hassell, seconded by McEvers to table Consent Item #4 until the Powderhorn issues are resolved. Motion carried.

COUNCIL ANNOUNCEMENTS:

COUNCILMAN GOODLANDER: Councilman Goodlander announced that the Idaho State Junior Miss Program is being hosted in Coeur d'Alene this Thursday, Friday and Saturday nights at North Idaho College.

COMMITTEE APPOINTMENTS: Motion by Kennedy, seconded by Goodlander to appoint Garry Stark to the Parking Commission and appoint Doug Fagerness to the Library Board. Motion carried.

ADMINISTRATOR'S REPORT: City Administrator Wendy Gabriel announced that on Saturday, November 6th, Specialized Needs Recreation (SNR) will hold its 6th Annual Prom Night at Prairie View Elementary in Post Falls (2478 East Poleline) from 6:00 PM until 9:00 PM. This year's theme is "An Enchanted Evening." If you have any questions or would like more information about SNR's programs, please call Angie Goucher at 755-6781. Please remember to ride bicycles in the same direction as vehicle traffic. Riding against traffic is more than three

times as dangerous as cycling in the correct manner! Monday, November 8, 2010 marks the start of the City of Coeur d'Alene's annual leaf pick-up program. Please rake your leaves and pine needles about one foot away from the gutter/curb line to allow for water drainage. Leaves will be picked up only once. Please do not put leaves in the street after city crews have completed your area, and do not include bagged leaves, branches, rubble, or refuse. Pick-up will start south of Sherman Avenue and move north. Completion is expected by Wednesday, November 24, 2010. If you have questions please check the website streets.cdavid.org or call the Street Maintenance Information line at 769-2233. The signal at 5th Street and Sherman Avenue has been intentionally put on flash to help make the intersection more efficient. The signal is over 20 years old and is not traffic-actuated, and does not respond to actual traffic volumes or movement. For more information, please call 769-2216. She commended staff for having "shovel ready" projects and obtaining federal grant funds which has helped with the city's economy.

PUBLIC HEARING: O-3-10 – AMENDMENTS TO OFF-STREET PARKING

REGULATIONS: Mayor Bloem announced that this public hearing has been rescheduled for December 7, 2010. She invited anyone in the audience who was at tonight's meeting who wished to testify during this public hearing may do so now or wait until December 7th.

PUBLIC COMMENTS: No public comments were offered at this time.

ADJOURNMENT: Motion by Goodlander, seconded by Kennedy to recess this meeting to November 15th at 12:00 noon in the City Hall Council Chambers. Motion carried.

The meeting recessed at 7:00 p.m.

Sandi Bloem, Mayor

ATTEST:

Susan Weathers, CMC
City Clerk

RESOLUTION NO. 10-044

A RESOLUTION OF THE CITY OF COEUR D'ALENE, KOOTENAI COUNTY, IDAHO AUTHORIZING CHANGE ORDER NOS 1 – 3 TO THE CONTRACT WITH ACI NORTHWEST, INC. FOR THE 12TH STREET, 13TH STREET, AND MARY LANE IMPROVEMENT PROJECTS.

WHEREAS, the City of Coeur d'Alene pursuant to Resolution No. 10-015 entered into a contract dated the 4th day of May, 2010 with ACI Northwest, Inc., for the 12th Street, 13th Street, and Mary Lane Improvement project pursuant to advertised bidding specifications; and

WHEREAS, it has been determined that modification is necessary, the Engineering Department has requested that the City of Coeur d'Alene approve Change Order Nos 1 - 3 to the contract at an additional cost of \$225,980.51, a copy of which change orders are attached hereto marked Exhibit "1" and by reference made a part hereof, thereby increasing the total contract price to \$647,208.12; and

WHEREAS, the City Council deems it to be in the best interests of the City of Coeur d'Alene and the citizens thereof to approve such change orders; NOW, THEREFORE,

BE IT RESOLVED, that the Mayor and City Council of the City of Coeur d'Alene hereby agree to the requested Change Order Nos 1-3 in the scope of the original specifications and contract with ACI Northwest, Inc, as set forth above, a copy of which Change Order Nos 1 -3 is attached hereto as Exhibit "1" and by reference made a part hereof.

BE IT FURTHER RESOLVED, that the Mayor and City Clerk be and they are hereby authorized to execute any and all documents necessary to effect such change orders on behalf of the City of Coeur d'Alene.

DATED this 16th day of November, 2010.

Sandi Bloem, Mayor

ATTEST:

Susan K. Weathers, City Clerk

Motion by _____, Seconded by _____, to adopt the foregoing resolution.

ROLL CALL:

COUNCIL MEMBER MCEVERS Voted _____

COUNCIL MEMBER HASSELL Voted _____

COUNCIL MEMBER KENNEDY Voted _____

COUNCIL MEMBER GOODLANDER Voted _____

COUNCIL MEMBER BRUNING Voted _____

COUNCIL MEMBER EDINGER Voted _____

_____ was absent. Motion _____.

PUBLIC WORKS COMMITTEE

STAFF REPORT

DATE: November 8, 2010
FROM: Dennis J. Grant, Engineering Project Manager
SUBJECT: **Approval of Change Order Numbers 1 – 3 for the 12th St., 13th St., and Mary Lane Improvement Project**

DECISION POINT

Staff is requesting City Council approval of change order numbers 1 – 3 to balance the final quantities for this year's 12th Street, 13th Street and Mary Lane Improvement Project.

HISTORY

On May 4th, 2010, the City of Coeur d'Alene signed a contract with ACI Northwest, Inc. to approve for construction the 12th St., 13th St., and Mary Lane Improvement Project. The project was completed in September of 2010. This project included underground utilities and surface improvements. City Council approval is necessary to amend the contract with ACI Northwest, Inc.

FINANCIAL ANALYSIS

The total cost of these change orders are \$225,980.51. This increase in the project cost will be shared with the City of Coeur d'Alene's Utility Departments and Impact Fees. The total cost for the improvement project was \$647,208.12. The funds came from the Overlay Fund, Impact Fees, and the Water, Wastewater, Storm Water Utilities. The project did not exceed the City of Coeur d'Alene budget of \$650,000.00. Therefore, there were sufficient funds in the project budget to cover the cost of these change orders.

PERFORMANCE ANALYSIS

These change orders are to balance the final construction quantities on the 12th, 13th, and Mary Lane Improvement Project. The main reason for the increase in the final contract price was costs incurred by adding the 15th Street at Harrison Avenue surface Improvements for the traffic signalization project. Other reasons were for some unexpected upgrades in the water service lines and wastewater improvements. See the attached change order numbers 1 – 3.

RECOMMENDATION

Staff recommends a motion to approve change order numbers 1 – 3 and a resolution to amend the contract with ACI Northwest, Inc.

CHANGE ORDER

NUMBER 1

PROJECT: 2010 12TH, 13TH, & MARY LN PROJECT

OWNER: CITY OF COEUR D' ALENE

EFFECTIVE DATE: JULY 20, 2010

CONTRACTOR: ACI NORTHWEST, INC

You are directed to make the following changes in the Contract Documents

Description: TO ADD THE 15TH STREET AT HARRISON AVENUE ROADWAY IMPROVEMENTS FOR THE TRAFFIC SIGNAL INSTALLATION.

Total Cost of Change Order: \$ 137,358.50

Increase

CHANGE IN CONTRACT AMOUNT:

Original Amount: \$ 297,884.85

Net Changes From Previous
Change Orders: \$ 0.00

Prior Contract Price: \$ 297,884.85

Net Increase: \$ 137,358.50

Revised Contract Amount: \$ 435,243.35

CHANGE IN CONTRACT TIMES:

Original Contract Days: 60

Original Completion Date: 7/22/10

Net Changes from Previous
Change Order Days: 0

Contract Days Prior to This
Change Order: 60

Net Increase of This
Change Order: 36

Revised Contract Days: 96

Revised Completion Date: 8/27/10

PREPARED:

By: Dennis J. Grant

Title: Engineering Project Manager

Date: July 20, 2010

APPROVED:

By: [Signature]

Owner: City of Coeur d'Alene

Date: July 20, 2010

ACCEPTED:

By: [Signature]

Contractor: ACI Northwest, Inc.

Date: 7/20/2010

CHANGE ORDER

NUMBER 2

PROJECT: 2010 12TH, 13TH, & MARY LN PROJECT

OWNER: CITY OF COEUR D' ALENE

EFFECTIVE DATE: AUGUST 3, 2010

CONTRACTOR: ACI NORTHWEST, INC

You are directed to make the following changes in the Contract Documents

Description:

- 1) Re-compaction of City Installed Water Line in Mary Lane: 1.50 HR @ \$340.00 per HR for an added contract cost of \$510.00.
- 2) Repair Shallow Water Line @ Mary Lane & 17th: Lump Sum for an added contract cost of \$860.00.
- 3) Fence Removal 3511 15th St: Lump Sum for an added contract cost of \$60.00.
- 4) Sewer lateral Connection to MH #7 in Mary Lane: Lump Sum for an added contract cost of \$135.80.
- 5) Sewer MH #6 in Mary Lane 1.5' Deeper: Lump Sum for an added contract cost of \$425.00.
- 6) 6" Transition Gasket: 1 EA @ \$9.60 per EA for an added contract cost of \$9.60.
- 7) 6" FL x MJ Gate Valve for Fire Hyd.: 1 EA @ \$628.00 per EA for an added contract cost of \$628.00.
- 8) 6" FL Bolt Kit & Gasket: 1 EA @ \$14.87 per EA for an added contract cost of \$14.87.
- 9) 6" MJ Gland Pack: 3 EA @ \$20.85 per EA for added contract cost of \$62.55.
- 10) Corp Stop for Ex. 1" Water Hookup on Mary Lane: 2 EA @ \$63.47 per EA for an added contract cost of \$126.94.
- 11) Urban Approach at 3603 15th St.: 3 EA @ \$1,510.66 per EA for an added contract cost of \$4,531.98.
- 12) Asphalt Driveway Transitions: 959.20 SF @ \$7.75 per SF for an added contract cost of \$7,433.80.
- 13) Hot Tap 8" AC Water Main, 12th & Stiner: 1 EA @ \$2,835.00 per EA for an added contract cost of \$2,835.00.
- 14) Install 8" C-900 Water Main in 12th St.: 520 LF @ \$32.00 per LF for an added contract cost of \$16,640.00.
- 15) Saw Cutting Concrete: 102 LF @ \$2.30 per LF for an added contract cost of \$234.60.

Total Cost of Change Order: \$34,508.14

Increase

CHANGE IN CONTRACT AMOUNT:

Original Amount:	<u>\$ 297,884.85</u>
Net Changes From Previous Change Orders:	<u>\$ 137,358.50</u>
Prior Contract Price:	<u>\$ 435,243.35</u>
Net Increase:	<u>\$ 34,508.14</u>
Revised Contract Amount:	<u>\$ 469,751.49</u>

CHANGE IN CONTRACT TIMES:

Original Contract Days:	<u>60</u>
Original Completion Date:	<u>7/22/10</u>
Net Changes from Previous Change Order Days:	<u>36</u>
Contract Days Prior to This Change Order:	<u>96</u>
Net Increase of This Change Order:	<u>0</u>
Revised Contract Days:	<u>0</u>
Revised Completion Date:	<u>8/27/10</u>

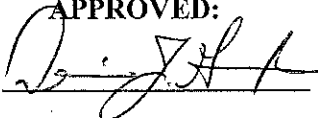
PREPARED:

By: Dennis J. Grant

Title: Engineering Project Manager

Date: August 3, 2010

APPROVED:

By: 

Owner: City of Coeur d'Alene

Date: August 3, 2010

ACCEPTED:

By: 

Contractor: ACI Northwest, Inc.

Date: August 5, 2010

CHANGE ORDER

NUMBER 3

PROJECT: 2010 12TH, 13TH, & MARY LN PROJECT

OWNER: CITY OF COEUR D' ALENE

EFFECTIVE DATE: OCTOBER 21, 2010

CONTRACTOR: ACI NORTHWEST, INC.

You are directed to make the following changes in the Contract Documents

Description: 1) To reflect actual quantities constructed.

Total Cost of Change Order: \$54,113.87

Increase

CHANGE IN CONTRACT AMOUNT:

Original Amount: \$ 297,884.85

Net Changes From Previous
Change Orders: \$ 171,866.64

Prior Contract Price: \$ 469,751.49

Net Increase: \$ 54,113.87

Revised Contract Amount: \$ 523,865.36

CHANGE IN CONTRACT TIMES:

Original Contract Days: 60

Original Completion Date: 7/22/10

Net Changes from Previous
Change Order Days: 36

Contract Days Prior to This
Change Order: 96

Net Increase of This
Change Order: 0

Revised Contract Days: 0

Revised Completion Date: 8/27/10

PREPARED:

By: Dennis J. Grant

Title: Engineering Project Manager

Date: October 21, 2010

APPROVED:

By: 

Owner: City of Coeur d'Alene

Date: October 21, 2010

ACCEPTED:

By: 

Contractor: ACI Northwest, Inc

Date: 10/29/10

RECEIVED

OCT 27 2010

ACI

RESOLUTION NO. 10-045

A RESOLUTION OF THE CITY OF COEUR D'ALENE, KOOTENAI COUNTY, IDAHO AUTHORIZING THE BELOW MENTIONED EMPLOYEE WORK AGREEMENTS OF THE CITY OF COEUR D'ALENE AND AUTHORIZING LIMITED BENEFITS FOR EMPLOYEES NOT REPRESENTED BY BARGAINING GROUPS.

WHEREAS, it has been recommended that the City of Coeur d'Alene enter into the contract amendments listed below pursuant to the terms and conditions set forth in the contracts attached hereto as Exhibits "1 through 5" and by reference made a part hereof as summarized as follows:

1. Lake City Employee Association (LCEA);
2. Coeur d'Alene Firefighters Local No. 710 International Association of Firefighters (IAFF);
3. Coeur d' Alene Fire Department Deputy Chiefs
4. Coeur d' Alene Police Association;
5. Coeur d' Alene Police Department Captains;
6. Coeur d' Alene Police Department Lieutenants; and

WHEREAS, the City's past practice has been to provide Non-Represented and FLSA exempt employees with benefits similar to those negotiated with LCEA; and

WHEREAS, it is deemed to be in the best interests of the City of Coeur d'Alene and the citizens thereof to enter into such contract amendments; NOW, THEREFORE,

BE IT RESOLVED, by the Mayor and City Council of the City of Coeur d'Alene that the City enter into the contract amendments as set forth in substantially the forms attached hereto as Exhibits "1 through 5" and incorporated herein by reference with the provision that the Mayor, City Administrator, and City Attorney are hereby authorized to modify said contracts so long as the substantive provisions of the contracts remain intact.

BE IT FURTHER RESOLVED that Non-Represented employees will receive the following benefits that are similar to those negotiated with LCEA as follows:

1. The City will provide a one-time deposit of 40 hours of vacation to their balance with the caveat that it must be used within two years or lost,
2. The City will provide an increase to life insurance from \$25,000 to \$50,000,

3. The City will pay any medical insurance premium increase up to a maximum of 12% over the previous year, for FY 2010-2011 only, and
4. The City will provide a 1% Cost of Living Adjustment (COLA) for FY 2010 – 2011 only.

BE IT FURTHER RESOLVED that FLSA exempt employees, excluding department heads, will receive the following benefits that are similar to those negotiated with LCEA as follows:

1. The City will provide a one-time deposit of 40 hours of vacation to their balance with the caveat that it must be used within two years or lost,
2. The City will pay any medical insurance premium increase up to a maximum of 12% over the previous year, for FY 2010-2011 only, and
3. The City will provide a 1% Cost of Living Adjustment (COLA) for FY 2010 – 2011 only.

BE IT FURTHER RESOLVED that department heads will receive the following benefit that is similar to those negotiated with LCEA as follows:

1. The City will provide a 1% Cost of Living Adjustment (COLA) for FY 2010-2011 only.

BE IT FURTHER RESOLVED, that the Mayor and City Clerk be and they are hereby authorized to execute contracts authorized by this resolution on behalf of the City.

DATED this 16th day of November, 2010.

Sandi Bloem, Mayor

ATTEST

Susan K. Weathers, City Clerk

Motion by _____, Seconded by _____, to adopt the foregoing resolution.

ROLL CALL:

COUNCIL MEMBER BRUNING Voted _____

COUNCIL MEMBER GOODLANDER Voted _____

COUNCIL MEMBER MCEVERS Voted _____

COUNCIL MEMBER HASSELL Voted _____

COUNCIL MEMBER KENNEDY Voted _____

COUNCIL MEMBER EDINGER Voted _____

_____ was absent. Motion _____.

PUBLIC WORKS COMMITTEE STAFF REPORT

DATE: November 9, 2010
FROM: Tim Martin, Street Superintendent
SUBJECT: 2010-2011 SNOW PLAN

DECISION POINT:

Staff requests Council approval of the 2010-2011 Snow Plan.

HISTORY/BACKGROUND:

Each year, the City has published a snow plan that outlines the policies, priorities and operational procedures for the Street Maintenance Department to follow in responding to snow emergencies. As in previous years, the proposed (draft) 2010-2011 Snow Plan summary has been made available at the Council Mail Room and at the Street Maintenance Department offices.

FINANCIAL ANALYSIS:

The proposed Snow Plan update is an annual “housekeeping” action that requires between 5 to 10 hours of staff time and printing costs of approximately \$150.00. Citizens and staff mutually benefit from a clear understanding of city snow removal policies and responsibilities. The Council’s snow removal policies are recorded in the Snow Plan and distributed in various forms such as pamphlets, newspaper articles and made available on the city website. The Snow Plan is the city’s primary means of educating the public on city snow removal policies.

PERFORMANCE ANALYSIS:

The majority of the policies and procedures outlined in the previous years’ Snow Plan are still considered relevant and are proposed to be continued out as routine operations this year. A summary of significant changes made to the snow plan since winter 2005-2006 include:

- Added a policy on the plowing of snow in cul-de-sacs directing operators to plow snow to the center of the cul-de-sac unless a vacant lot or snow storage area is provided.
- Added a statement that snow gates will not be used on arterials due to the large volume of snow pushed to the curb on wider streets.
- Added a statement empowering the Street Superintendent to suspend snow gate service in the event that extreme conditions warrant.
- Continue to provide the citizens with “State of the Art” plow operations and provide unrestricted road surfaces. As the city continues to grow rapidly and more streets are extended the citywide plowing completion target will again be 38 hours (a reduction of 32 percent reduction since winter 1999-2000).

Changes proposed for the 2010-2011 snow plan are summarized below:

- Added new and/or extended streets, new subdivisions and cul-de-sacs.

DECISION POINT/RECOMMENDATION:

Staff requests Council approval of the 2010-2011 Snow Plan.

DATE: November 9, 2010
TO: MAYOR AND CITY COUNCIL
FROM: BUILDING DEPARTMENT
RE: SETTING OF PUBLIC HEARING DATE: December 21, 1010

Mayor and City Council,

The Building Department has forwarded the following item to the City Council for scheduling of a public hearing. In keeping with state law and Council policy, the Council will set the date of the public hearing upon receipt of recommendation.

REQUEST

ACTION

COMMENT

Adopt the 2009 Edition of the Building, Residential, Fuel Gas, Mechanical, and Existing Building Codes

Recommended Adoption

Legislative

In order to satisfy the mandatory 30-day notice requirement, the next recommended hearing date will be December 21, 2010.

BEER, WINE, AND/OR LIQUOR APPLICATION Expires March 1 annual

prorate Nov

City of Coeur d' Alene
 Municipal Services
 710 Mullan Avenue
 Coeur d' Alene, Idaho 83814
 208.769.2229 Fax 769.2237

[Office Use Only] Amt Pd \$3.32
 Rec No _____
 Date 11-01-2010
 Date to City Council: 11-16-10
 Reg No. _____
 License No. _____
 By _____

Date that you would like to begin alcohol service _____

Check the ONE box that applies:

<input type="checkbox"/>	Beer only (canned and bottled) not consumed on premise	\$ 50.00 per year
<input checked="" type="checkbox"/>	Beer and Wine (canned and bottled) not consumed on premise	\$250.00 per year
<input type="checkbox"/>	Beer only (canned and bottled only) consumed on premise	\$100.00 per year
<input type="checkbox"/>	Beer and Wine (canned and bottled only) consumed on premise	\$300.00 per year
<input type="checkbox"/>	Beer only (draft, canned, and bottled) consumed on premise	\$200.00 per year
<input type="checkbox"/>	Beer and Wine (Draft, canned, and bottled) consumed on premise	\$400.00 per year
<input type="checkbox"/>	Beer, Wine, and Liquor (number issued limited by State of Id)	\$762.50 per year
<input type="checkbox"/>	Transfer of ownership of a City license with current year paid Beer-to go only \$6.25 Beer- Can, Bottled only \$12.50 Beer- Draft, can, bottled \$25 Consumed on premise yes no Transfer from _____ to _____	\$

Business Name	<u>ART 3 HOME CENTER</u>
Business Mailing Address	<u>1619 W. LEE CT</u>
City, State, Zip	<u>Coeur d'Alene ID 83814</u>
Business Physical Address	<u>same</u>
City, State, Zip	<u>,</u>
Business Contact	Business Telephone: <u>208 665 7777</u> Fax: <u>665 7771</u>
License Applicant	<u>Patricia Chadwick</u>
If Corporation, partnership, LLC etc. List all members/officers	<u>N/A</u>

City of Coeur d' Alene
 Municipal Services
 710 Mullan Avenue
 Coeur d' Alene, Idaho 83814
 208.769.2229 Fax 769.2237

[Office Use Only] Amt Pd \$99.99 *pro-rated*
 Rec No 517268
 Date 09-28-2010
 Date to City Council 11/16/2010
 Reg No.
 License No.
 Rv

Date that you would like to begin alcohol service December 2010

Check the ONE box that applies:

<input type="checkbox"/>	Beer only (canned and bottled) not consumed on premise	\$ 50.00 per year
<input type="checkbox"/>	Beer and Wine (canned and bottled) not consumed on premise	\$250.00 per year
<input type="checkbox"/>	Beer only (canned and bottled only) consumed on premise	\$100.00 per year
<input type="checkbox"/>	Beer and Wine (canned and bottled only) consumed on premise	\$300.00 per year
<input type="checkbox"/>	Beer only (draft, canned, and bottled) consumed on premise	\$200.00 per year
<input checked="" type="checkbox"/>	Beer and Wine (Draft, canned, and bottled) consumed on premise	\$400.00 per year <input checked="" type="checkbox"/>
<input type="checkbox"/>	Beer, Wine, and Liquor (number issued limited by State of Id)	\$762.50 per year
<input type="checkbox"/>	Transfer of ownership of a City license with current year paid Beer-to go only \$6.25 Beer- Can, Bottled only \$12.50 Beer- Draft, can, bottled \$25 Consumed on premise yes no Transfer from _____ to _____	\$

located in Parkside

Business Name	GRILLE FROM ITALYEMA
Business Mailing Address	601 FRONT AV., SUITE 101
City, State, Zip	COEUR D'ALENE / IDAHO / 83814
Business Physical Address	601 FRONT AV., STE 101
City, State, Zip	COEUR D'ALENE / IDAHO / 83814
Business Contact	Business Telephone : 801-616-2376 Fax:
License Applicant	R. ADRIANO DE SOUZA
If Corporation, partnership, LLC etc. List all members/officers	R. ADRIANO DE SOUZA Wendy S. DE SOUZA

**CITY COUNCIL
STAFF REPORT**

DATE: November 16, 2010
FROM: Christopher H. Bates, Engineering Project Manager 
SUBJECT: Mort Addition, Final Plat Approval

DECISION POINT

Staff is requesting the following:

1. City Council approval of the final plat document, a four (4) residential subdivision.

HISTORY

- a. Applicant: Thomas D. Mort
11741 W. Romin Road
Post Falls, ID 83854
- b. Location: North side of Nettleton Gulch Road, +/- 420' east of 15th Street.
- c. Previous Action: Preliminary plat approval – August 2010.

FINANCIAL ANALYSIS

There are no financial issues with this subdivision.

PERFORMANCE ANALYSIS

There are no infrastructure developments that need to be addressed. All required improvements were previously installed during the site development process.

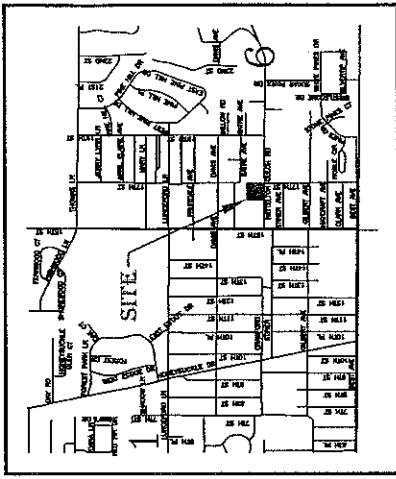
DECISION POINT RECOMMENDATION

Approve the final plat document.

MORT ADDITION

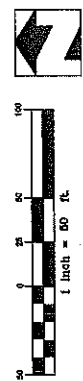
A PORTION OF LOT 28 OF FRUITDALE, SITUATED IN THE NORTHWEST QUARTER OF THE SOUTHWEST QUARTER OF SECTION 6, T50N, R3W, B.M., CITY OF COEUR D'ALENE, KOOTENAI COUNTY IDAHO

INSTRUMENT # _____
BOOK _____ PAGE _____

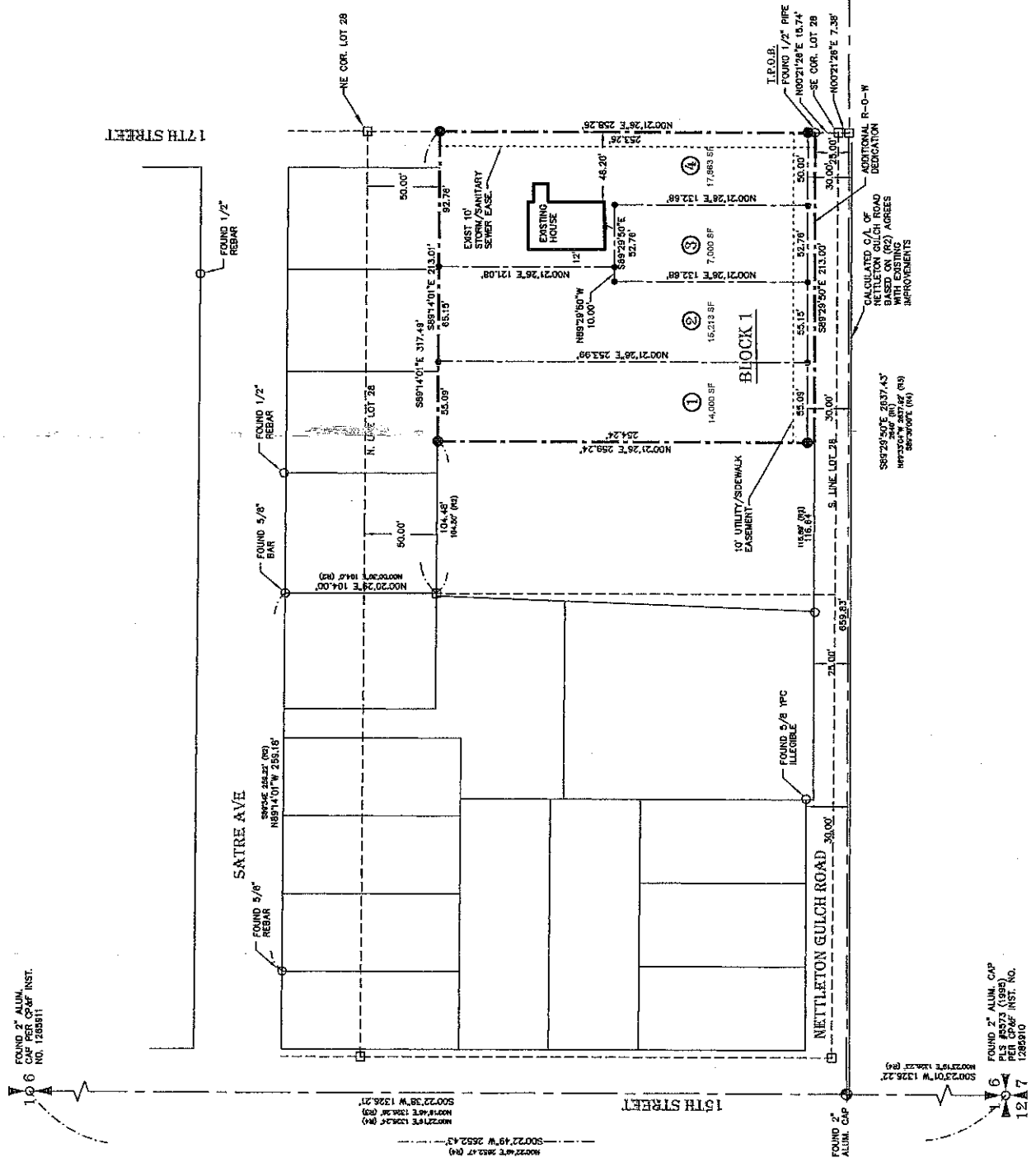


- LEGEND**
- FOUND MONUMENT AS NOTED
 - SET 5/8"x30" IRON ROD WITH PLASTIC CAP, PLS #12463
 - SET 1/2"x24" IRON ROD WITH PLASTIC CAP, PLS #12463
 - CALCULATED POINT (NOTHING FOUND OR SET)


- REFERENCES**
- R1 PLAY OF FRUITDALE - BOOK B PAGE 134 (1907)
 - R2 SHANRACHELLE TERRACE - BOOK E, PAGE 223 (1976)
 - R3 RECORD OF SURVEY BY PLS 10689 - BOOK 24, PAGE 227 (2000)
 - R4 STRIKER ADDITION - BOOK J, PAGE 346 (2009)



BASIS OF BEARING
THE LINE BETWEEN THE SOUTHWEST CORNER OF SECTION 6 AND THE WEST QUARTER CORNER OF SECTION 6, T50N, R3W, B.M., KOOTENAI COUNTY IDAHO, IS TAKEN TO BE N002248°E PER (R4).



**CITY COUNCIL
STAFF REPORT**

DATE: November 16, 2010
FROM: Christopher H. Bates, Engineering Project Manager 
SUBJECT: Sorbonne 2nd Addition: Final Plat Approval

DECISION POINT

Staff is requesting the following:

1. Approval of the final plat document, a twenty three (23) lot residential development.

HISTORY

- a. Applicant: Kevin Schneidmiller
Greenstone-Kootenai, Inc.
1421 N. Meadowwood Lane
Suite 200
Liberty Lake, WA 99019
- b. Location: North of Sorbonne Drive and west of Cornwall Street.
- c. Previous Action:
 1. Final plat of Sorbonne Addition, September 2007
 2. Final plat of Sorbonne 1st Addition, November 2010

FINANCIAL ANALYSIS

There are no financial agreements necessary for this phase of the development.

PERFORMANCE ANALYSIS

The developer previously installed all of the required utility infrastructure with the Sorbonne Addition (2007), and the Bernoulli Loop roadway is private and under the management of the homeowners association.

DECISION POINT RECOMMENDATION

1. Approve the final plat document.



C.L.C. ASSOCIATES
 13750 N. SUNSHINE BLVD. SUITE 100
 SPokane, WA 99218
 P: 509-486-4444
 F: 509-486-4444
 WWW.CLC-ASSOCIATES.COM
 0-000 SORBONNE 2ND ADDITION
 SUBDIVISION PLANNING
 ENGINEERING & SURVEYING
 LAND SURVEYING

BASIS OF BEARINGS
 THE BEARINGS OF SURVEY'S ALONG THE WEST LINE OF SECTION 27, ACCORDING TO THE PLAT RECORDED IN BOOK 6 OF PLATS 336, 337, 338, 339, 340, 341, 342, 343, 344, 345, 346, 347, 348, 349, 350, 351, 352, 353, 354, 355, 356, 357, 358, 359, 360, 361, 362, 363, 364, 365, 366, 367, 368, 369, 370, 371, 372, 373, 374, 375, 376, 377, 378, 379, 380, 381, 382, 383, 384, 385, 386, 387, 388, 389, 390, 391, 392, 393, 394, 395, 396, 397, 398, 399, 400, 401, 402, 403, 404, 405, 406, 407, 408, 409, 410, 411, 412, 413, 414, 415, 416, 417, 418, 419, 420, 421, 422, 423, 424, 425, 426, 427, 428, 429, 430, 431, 432, 433, 434, 435, 436, 437, 438, 439, 440, 441, 442, 443, 444, 445, 446, 447, 448, 449, 450, 451, 452, 453, 454, 455, 456, 457, 458, 459, 460, 461, 462, 463, 464, 465, 466, 467, 468, 469, 470, 471, 472, 473, 474, 475, 476, 477, 478, 479, 480, 481, 482, 483, 484, 485, 486, 487, 488, 489, 490, 491, 492, 493, 494, 495, 496, 497, 498, 499, 500, 501, 502, 503, 504, 505, 506, 507, 508, 509, 510, 511, 512, 513, 514, 515, 516, 517, 518, 519, 520, 521, 522, 523, 524, 525, 526, 527, 528, 529, 530, 531, 532, 533, 534, 535, 536, 537, 538, 539, 540, 541, 542, 543, 544, 545, 546, 547, 548, 549, 550, 551, 552, 553, 554, 555, 556, 557, 558, 559, 560, 561, 562, 563, 564, 565, 566, 567, 568, 569, 570, 571, 572, 573, 574, 575, 576, 577, 578, 579, 580, 581, 582, 583, 584, 585, 586, 587, 588, 589, 590, 591, 592, 593, 594, 595, 596, 597, 598, 599, 600, 601, 602, 603, 604, 605, 606, 607, 608, 609, 610, 611, 612, 613, 614, 615, 616, 617, 618, 619, 620, 621, 622, 623, 624, 625, 626, 627, 628, 629, 630, 631, 632, 633, 634, 635, 636, 637, 638, 639, 640, 641, 642, 643, 644, 645, 646, 647, 648, 649, 650, 651, 652, 653, 654, 655, 656, 657, 658, 659, 660, 661, 662, 663, 664, 665, 666, 667, 668, 669, 670, 671, 672, 673, 674, 675, 676, 677, 678, 679, 680, 681, 682, 683, 684, 685, 686, 687, 688, 689, 690, 691, 692, 693, 694, 695, 696, 697, 698, 699, 700, 701, 702, 703, 704, 705, 706, 707, 708, 709, 710, 711, 712, 713, 714, 715, 716, 717, 718, 719, 720, 721, 722, 723, 724, 725, 726, 727, 728, 729, 730, 731, 732, 733, 734, 735, 736, 737, 738, 739, 740, 741, 742, 743, 744, 745, 746, 747, 748, 749, 750, 751, 752, 753, 754, 755, 756, 757, 758, 759, 760, 761, 762, 763, 764, 765, 766, 767, 768, 769, 770, 771, 772, 773, 774, 775, 776, 777, 778, 779, 780, 781, 782, 783, 784, 785, 786, 787, 788, 789, 790, 791, 792, 793, 794, 795, 796, 797, 798, 799, 800, 801, 802, 803, 804, 805, 806, 807, 808, 809, 810, 811, 812, 813, 814, 815, 816, 817, 818, 819, 820, 821, 822, 823, 824, 825, 826, 827, 828, 829, 830, 831, 832, 833, 834, 835, 836, 837, 838, 839, 840, 841, 842, 843, 844, 845, 846, 847, 848, 849, 850, 851, 852, 853, 854, 855, 856, 857, 858, 859, 860, 861, 862, 863, 864, 865, 866, 867, 868, 869, 870, 871, 872, 873, 874, 875, 876, 877, 878, 879, 880, 881, 882, 883, 884, 885, 886, 887, 888, 889, 890, 891, 892, 893, 894, 895, 896, 897, 898, 899, 900, 901, 902, 903, 904, 905, 906, 907, 908, 909, 910, 911, 912, 913, 914, 915, 916, 917, 918, 919, 920, 921, 922, 923, 924, 925, 926, 927, 928, 929, 930, 931, 932, 933, 934, 935, 936, 937, 938, 939, 940, 941, 942, 943, 944, 945, 946, 947, 948, 949, 950, 951, 952, 953, 954, 955, 956, 957, 958, 959, 960, 961, 962, 963, 964, 965, 966, 967, 968, 969, 970, 971, 972, 973, 974, 975, 976, 977, 978, 979, 980, 981, 982, 983, 984, 985, 986, 987, 988, 989, 990, 991, 992, 993, 994, 995, 996, 997, 998, 999, 1000.

SURVEY REFERENCES
 A) COEUR D'ALENE PLACE FIFTEENTH ADDITION, RECORDED IN BOOK 1 OF PLATS, PAGES 295-299;
 B) COEUR D'ALENE PLACE SEVENTH ADDITION, RECORDED IN BOOK 6 OF PLATS, PAGES 340-348;
 C) COEUR D'ALENE PLACE SIXTEENTH ADDITION, RECORDED IN BOOK 6 OF PLATS, PAGES 349-356;
 D) COEUR D'ALENE PLACE SEVENTEENTH ADDITION, RECORDED IN BOOK 6 OF PLATS, PAGES 357-364;
 E) COEUR D'ALENE PLACE EIGHTEENTH ADDITION, RECORDED IN BOOK 6 OF PLATS, PAGES 365-372;
 F) SUNSHINE MEADOW SEVENTH ADDITION, RECORDED IN BOOK 1 OF PLATS, PAGES 182-189;
 G) SUNSHINE MEADOW EIGHTH ADDITION, RECORDED IN BOOK 1 OF PLATS, PAGES 190-197;
 H) SUNSHINE MEADOW NINTH ADDITION, RECORDED IN BOOK 1 OF PLATS, PAGES 198-205;
 I) SUNSHINE MEADOW TENTH ADDITION, RECORDED IN BOOK 1 OF PLATS, PAGES 206-213;
 J) SUNSHINE MEADOW ELEVENTH ADDITION, RECORDED IN BOOK 1 OF PLATS, PAGES 214-221;
 K) SUNSHINE MEADOW TWELFTH ADDITION, RECORDED IN BOOK 1 OF PLATS, PAGES 222-229;
 L) SUNSHINE MEADOW THIRTEENTH ADDITION, RECORDED IN BOOK 1 OF PLATS, PAGES 230-237;
 M) SUNSHINE MEADOW FOURTEENTH ADDITION, RECORDED IN BOOK 1 OF PLATS, PAGES 238-245;
 N) SUNSHINE MEADOW FIFTEENTH ADDITION, RECORDED IN BOOK 1 OF PLATS, PAGES 246-253;
 O) SUNSHINE MEADOW SIXTEENTH ADDITION, RECORDED IN BOOK 1 OF PLATS, PAGES 254-261;
 P) SUNSHINE MEADOW SEVENTEENTH ADDITION, RECORDED IN BOOK 1 OF PLATS, PAGES 262-269;
 Q) SUNSHINE MEADOW EIGHTEENTH ADDITION, RECORDED IN BOOK 1 OF PLATS, PAGES 270-277;
 R) SUNSHINE MEADOW NINETEENTH ADDITION, RECORDED IN BOOK 1 OF PLATS, PAGES 278-285;
 S) SUNSHINE MEADOW TWENTIETH ADDITION, RECORDED IN BOOK 1 OF PLATS, PAGES 286-293;
 T) SUNSHINE MEADOW TWENTY-FIRST ADDITION, RECORDED IN BOOK 1 OF PLATS, PAGES 294-301;
 U) SUNSHINE MEADOW TWENTY-SECOND ADDITION, RECORDED IN BOOK 1 OF PLATS, PAGES 302-309;
 V) SUNSHINE MEADOW TWENTY-THIRD ADDITION, RECORDED IN BOOK 1 OF PLATS, PAGES 310-317;
 W) SUNSHINE MEADOW TWENTY-FOURTH ADDITION, RECORDED IN BOOK 1 OF PLATS, PAGES 318-325;
 X) SUNSHINE MEADOW TWENTY-FIFTH ADDITION, RECORDED IN BOOK 1 OF PLATS, PAGES 326-333;
 Y) SUNSHINE MEADOW TWENTY-SIXTH ADDITION, RECORDED IN BOOK 1 OF PLATS, PAGES 334-341;
 Z) SUNSHINE MEADOW TWENTY-SEVENTH ADDITION, RECORDED IN BOOK 1 OF PLATS, PAGES 342-349;
 AA) SUNSHINE MEADOW TWENTY-EIGHTH ADDITION, RECORDED IN BOOK 1 OF PLATS, PAGES 350-357;
 AB) SUNSHINE MEADOW TWENTY-NINTH ADDITION, RECORDED IN BOOK 1 OF PLATS, PAGES 358-365;
 AC) SUNSHINE MEADOW THIRTIETH ADDITION, RECORDED IN BOOK 1 OF PLATS, PAGES 366-373;
 AD) SUNSHINE MEADOW THIRTY-FIRST ADDITION, RECORDED IN BOOK 1 OF PLATS, PAGES 374-381;
 AE) SUNSHINE MEADOW THIRTY-SECOND ADDITION, RECORDED IN BOOK 1 OF PLATS, PAGES 382-389;
 AF) SUNSHINE MEADOW THIRTY-THIRD ADDITION, RECORDED IN BOOK 1 OF PLATS, PAGES 390-397;
 AG) SUNSHINE MEADOW THIRTY-FOURTH ADDITION, RECORDED IN BOOK 1 OF PLATS, PAGES 398-405;
 AH) SUNSHINE MEADOW THIRTY-FIFTH ADDITION, RECORDED IN BOOK 1 OF PLATS, PAGES 406-413;
 AI) SUNSHINE MEADOW THIRTY-SIXTH ADDITION, RECORDED IN BOOK 1 OF PLATS, PAGES 414-421;
 AJ) SUNSHINE MEADOW THIRTY-SEVENTH ADDITION, RECORDED IN BOOK 1 OF PLATS, PAGES 422-429;
 AK) SUNSHINE MEADOW THIRTY-EIGHTH ADDITION, RECORDED IN BOOK 1 OF PLATS, PAGES 430-437;
 AL) SUNSHINE MEADOW THIRTY-NINTH ADDITION, RECORDED IN BOOK 1 OF PLATS, PAGES 438-445;
 AM) SUNSHINE MEADOW FORTIETH ADDITION, RECORDED IN BOOK 1 OF PLATS, PAGES 446-453;
 AN) SUNSHINE MEADOW FORTY-FIRST ADDITION, RECORDED IN BOOK 1 OF PLATS, PAGES 454-461;
 AO) SUNSHINE MEADOW FORTY-SECOND ADDITION, RECORDED IN BOOK 1 OF PLATS, PAGES 462-469;
 AP) SUNSHINE MEADOW FORTY-THIRD ADDITION, RECORDED IN BOOK 1 OF PLATS, PAGES 470-477;
 AQ) SUNSHINE MEADOW FORTY-FOURTH ADDITION, RECORDED IN BOOK 1 OF PLATS, PAGES 478-485;
 AR) SUNSHINE MEADOW FORTY-FIFTH ADDITION, RECORDED IN BOOK 1 OF PLATS, PAGES 486-493;
 AS) SUNSHINE MEADOW FORTY-SIXTH ADDITION, RECORDED IN BOOK 1 OF PLATS, PAGES 494-501;
 AT) SUNSHINE MEADOW FORTY-SEVENTH ADDITION, RECORDED IN BOOK 1 OF PLATS, PAGES 502-509;
 AU) SUNSHINE MEADOW FORTY-EIGHTH ADDITION, RECORDED IN BOOK 1 OF PLATS, PAGES 510-517;
 AV) SUNSHINE MEADOW FORTY-NINTH ADDITION, RECORDED IN BOOK 1 OF PLATS, PAGES 518-525;
 AW) SUNSHINE MEADOW FIFTIETH ADDITION, RECORDED IN BOOK 1 OF PLATS, PAGES 526-533;
 AX) SUNSHINE MEADOW FIFTY-FIRST ADDITION, RECORDED IN BOOK 1 OF PLATS, PAGES 534-541;
 AY) SUNSHINE MEADOW FIFTY-SECOND ADDITION, RECORDED IN BOOK 1 OF PLATS, PAGES 542-549;
 AZ) SUNSHINE MEADOW FIFTY-THIRD ADDITION, RECORDED IN BOOK 1 OF PLATS, PAGES 550-557;
 BA) SUNSHINE MEADOW FIFTY-FOURTH ADDITION, RECORDED IN BOOK 1 OF PLATS, PAGES 558-565;
 BB) SUNSHINE MEADOW FIFTY-FIFTH ADDITION, RECORDED IN BOOK 1 OF PLATS, PAGES 566-573;
 BC) SUNSHINE MEADOW FIFTY-SIXTH ADDITION, RECORDED IN BOOK 1 OF PLATS, PAGES 574-581;
 BD) SUNSHINE MEADOW FIFTY-SEVENTH ADDITION, RECORDED IN BOOK 1 OF PLATS, PAGES 582-589;
 BE) SUNSHINE MEADOW FIFTY-EIGHTH ADDITION, RECORDED IN BOOK 1 OF PLATS, PAGES 590-597;
 BF) SUNSHINE MEADOW FIFTY-NINTH ADDITION, RECORDED IN BOOK 1 OF PLATS, PAGES 598-605;
 BG) SUNSHINE MEADOW SIXTIETH ADDITION, RECORDED IN BOOK 1 OF PLATS, PAGES 606-613;
 BH) SUNSHINE MEADOW SIXTY-FIRST ADDITION, RECORDED IN BOOK 1 OF PLATS, PAGES 614-621;
 BI) SUNSHINE MEADOW SIXTY-SECOND ADDITION, RECORDED IN BOOK 1 OF PLATS, PAGES 622-629;
 BJ) SUNSHINE MEADOW SIXTY-THIRD ADDITION, RECORDED IN BOOK 1 OF PLATS, PAGES 630-637;
 BK) SUNSHINE MEADOW SIXTY-FOURTH ADDITION, RECORDED IN BOOK 1 OF PLATS, PAGES 638-645;
 BL) SUNSHINE MEADOW SIXTY-FIFTH ADDITION, RECORDED IN BOOK 1 OF PLATS, PAGES 646-653;
 BM) SUNSHINE MEADOW SIXTY-SIXTH ADDITION, RECORDED IN BOOK 1 OF PLATS, PAGES 654-661;
 BN) SUNSHINE MEADOW SIXTY-SEVENTH ADDITION, RECORDED IN BOOK 1 OF PLATS, PAGES 662-669;
 BO) SUNSHINE MEADOW SIXTY-EIGHTH ADDITION, RECORDED IN BOOK 1 OF PLATS, PAGES 670-677;
 BP) SUNSHINE MEADOW SIXTY-NINTH ADDITION, RECORDED IN BOOK 1 OF PLATS, PAGES 678-685;
 BQ) SUNSHINE MEADOW SEVENTIETH ADDITION, RECORDED IN BOOK 1 OF PLATS, PAGES 686-693;
 BR) SUNSHINE MEADOW SEVENTY-FIRST ADDITION, RECORDED IN BOOK 1 OF PLATS, PAGES 694-701;
 BS) SUNSHINE MEADOW SEVENTY-SECOND ADDITION, RECORDED IN BOOK 1 OF PLATS, PAGES 702-709;
 BT) SUNSHINE MEADOW SEVENTY-THIRD ADDITION, RECORDED IN BOOK 1 OF PLATS, PAGES 710-717;
 BU) SUNSHINE MEADOW SEVENTY-FOURTH ADDITION, RECORDED IN BOOK 1 OF PLATS, PAGES 718-725;
 BV) SUNSHINE MEADOW SEVENTY-FIFTH ADDITION, RECORDED IN BOOK 1 OF PLATS, PAGES 726-733;
 BW) SUNSHINE MEADOW SEVENTY-SIXTH ADDITION, RECORDED IN BOOK 1 OF PLATS, PAGES 734-741;
 BX) SUNSHINE MEADOW SEVENTY-SEVENTH ADDITION, RECORDED IN BOOK 1 OF PLATS, PAGES 742-749;
 BY) SUNSHINE MEADOW SEVENTY-EIGHTH ADDITION, RECORDED IN BOOK 1 OF PLATS, PAGES 750-757;
 BZ) SUNSHINE MEADOW SEVENTY-NINTH ADDITION, RECORDED IN BOOK 1 OF PLATS, PAGES 758-765;
 CA) SUNSHINE MEADOW EIGHTIETH ADDITION, RECORDED IN BOOK 1 OF PLATS, PAGES 766-773;
 CB) SUNSHINE MEADOW EIGHTY-FIRST ADDITION, RECORDED IN BOOK 1 OF PLATS, PAGES 774-781;
 CC) SUNSHINE MEADOW EIGHTY-SECOND ADDITION, RECORDED IN BOOK 1 OF PLATS, PAGES 782-789;
 CD) SUNSHINE MEADOW EIGHTY-THIRD ADDITION, RECORDED IN BOOK 1 OF PLATS, PAGES 790-797;
 CE) SUNSHINE MEADOW EIGHTY-FOURTH ADDITION, RECORDED IN BOOK 1 OF PLATS, PAGES 798-805;
 CF) SUNSHINE MEADOW EIGHTY-FIFTH ADDITION, RECORDED IN BOOK 1 OF PLATS, PAGES 806-813;
 CG) SUNSHINE MEADOW EIGHTY-SIXTH ADDITION, RECORDED IN BOOK 1 OF PLATS, PAGES 814-821;
 CH) SUNSHINE MEADOW EIGHTY-SEVENTH ADDITION, RECORDED IN BOOK 1 OF PLATS, PAGES 822-829;
 CI) SUNSHINE MEADOW EIGHTY-EIGHTH ADDITION, RECORDED IN BOOK 1 OF PLATS, PAGES 830-837;
 CJ) SUNSHINE MEADOW EIGHTY-NINTH ADDITION, RECORDED IN BOOK 1 OF PLATS, PAGES 838-845;
 CK) SUNSHINE MEADOW NINETY ADDITION, RECORDED IN BOOK 1 OF PLATS, PAGES 846-853;
 CL) SUNSHINE MEADOW NINETY-FIRST ADDITION, RECORDED IN BOOK 1 OF PLATS, PAGES 854-861;
 CM) SUNSHINE MEADOW NINETY-SECOND ADDITION, RECORDED IN BOOK 1 OF PLATS, PAGES 862-869;
 CN) SUNSHINE MEADOW NINETY-THIRD ADDITION, RECORDED IN BOOK 1 OF PLATS, PAGES 870-877;
 CO) SUNSHINE MEADOW NINETY-FOURTH ADDITION, RECORDED IN BOOK 1 OF PLATS, PAGES 878-885;
 CP) SUNSHINE MEADOW NINETY-FIFTH ADDITION, RECORDED IN BOOK 1 OF PLATS, PAGES 886-893;
 CQ) SUNSHINE MEADOW NINETY-SIXTH ADDITION, RECORDED IN BOOK 1 OF PLATS, PAGES 894-901;
 CR) SUNSHINE MEADOW NINETY-SEVENTH ADDITION, RECORDED IN BOOK 1 OF PLATS, PAGES 902-909;
 CS) SUNSHINE MEADOW NINETY-EIGHTH ADDITION, RECORDED IN BOOK 1 OF PLATS, PAGES 910-917;
 CT) SUNSHINE MEADOW NINETY-NINTH ADDITION, RECORDED IN BOOK 1 OF PLATS, PAGES 918-925;
 CU) SUNSHINE MEADOW ONE HUNDRED ADDITION, RECORDED IN BOOK 1 OF PLATS, PAGES 926-933;
 CV) SUNSHINE MEADOW ONE HUNDRED AND ONE ADDITION, RECORDED IN BOOK 1 OF PLATS, PAGES 934-941;
 CW) SUNSHINE MEADOW ONE HUNDRED AND TWO ADDITION, RECORDED IN BOOK 1 OF PLATS, PAGES 942-949;
 CX) SUNSHINE MEADOW ONE HUNDRED AND THREE ADDITION, RECORDED IN BOOK 1 OF PLATS, PAGES 950-957;
 CY) SUNSHINE MEADOW ONE HUNDRED AND FOUR ADDITION, RECORDED IN BOOK 1 OF PLATS, PAGES 958-965;
 CZ) SUNSHINE MEADOW ONE HUNDRED AND FIVE ADDITION, RECORDED IN BOOK 1 OF PLATS, PAGES 966-973;
 DA) SUNSHINE MEADOW ONE HUNDRED AND SIX ADDITION, RECORDED IN BOOK 1 OF PLATS, PAGES 974-981;
 DB) SUNSHINE MEADOW ONE HUNDRED AND SEVEN ADDITION, RECORDED IN BOOK 1 OF PLATS, PAGES 982-989;
 DC) SUNSHINE MEADOW ONE HUNDRED AND EIGHT ADDITION, RECORDED IN BOOK 1 OF PLATS, PAGES 990-997;
 DD) SUNSHINE MEADOW ONE HUNDRED AND NINE ADDITION, RECORDED IN BOOK 1 OF PLATS, PAGES 998-1005;
 DE) SUNSHINE MEADOW ONE HUNDRED AND TEN ADDITION, RECORDED IN BOOK 1 OF PLATS, PAGES 1006-1013;
 DF) SUNSHINE MEADOW ONE HUNDRED AND ELEVEN ADDITION, RECORDED IN BOOK 1 OF PLATS, PAGES 1014-1021;
 DG) SUNSHINE MEADOW ONE HUNDRED AND TWELVE ADDITION, RECORDED IN BOOK 1 OF PLATS, PAGES 1022-1029;
 DH) SUNSHINE MEADOW ONE HUNDRED AND THIRTEEN ADDITION, RECORDED IN BOOK 1 OF PLATS, PAGES 1030-1037;
 DI) SUNSHINE MEADOW ONE HUNDRED AND FOURTEEN ADDITION, RECORDED IN BOOK 1 OF PLATS, PAGES 1038-1045;
 DJ) SUNSHINE MEADOW ONE HUNDRED AND FIFTEEN ADDITION, RECORDED IN BOOK 1 OF PLATS, PAGES 1046-1053;
 DK) SUNSHINE MEADOW ONE HUNDRED AND SIXTEEN ADDITION, RECORDED IN BOOK 1 OF PLATS, PAGES 1054-1061;
 DL) SUNSHINE MEADOW ONE HUNDRED AND SEVENTEEN ADDITION, RECORDED IN BOOK 1 OF PLATS, PAGES 1062-1069;
 DM) SUNSHINE MEADOW ONE HUNDRED AND EIGHTEEN ADDITION, RECORDED IN BOOK 1 OF PLATS, PAGES 1070-1077;
 DN) SUNSHINE MEADOW ONE HUNDRED AND NINETEEN ADDITION, RECORDED IN BOOK 1 OF PLATS, PAGES 1078-1085;
 DO) SUNSHINE MEADOW ONE HUNDRED AND TWENTY ADDITION, RECORDED IN BOOK 1 OF PLATS, PAGES 1086-1093;
 DP) SUNSHINE MEADOW ONE HUNDRED AND TWENTY-ONE ADDITION, RECORDED IN BOOK 1 OF PLATS, PAGES 1094-1101;
 DQ) SUNSHINE MEADOW ONE HUNDRED AND TWENTY-TWO ADDITION, RECORDED IN BOOK 1 OF PLATS, PAGES 1102-1109;
 DR) SUNSHINE MEADOW ONE HUNDRED AND TWENTY-THREE ADDITION, RECORDED IN BOOK 1 OF PLATS, PAGES 1110-1117;
 DS) SUNSHINE MEADOW ONE HUNDRED AND TWENTY-FOUR ADDITION, RECORDED IN BOOK 1 OF PLATS, PAGES 1118-1125;
 DT) SUNSHINE MEADOW ONE HUNDRED AND TWENTY-FIVE ADDITION, RECORDED IN BOOK 1 OF PLATS, PAGES 1126-1133;
 DU) SUNSHINE MEADOW ONE HUNDRED AND TWENTY-SIX ADDITION, RECORDED IN BOOK 1 OF PLATS, PAGES 1134-1141;
 DV) SUNSHINE MEADOW ONE HUNDRED AND TWENTY-SEVEN ADDITION, RECORDED IN BOOK 1 OF PLATS, PAGES 1142-1149;
 DW) SUNSHINE MEADOW ONE HUNDRED AND TWENTY-EIGHT ADDITION, RECORDED IN BOOK 1 OF PLATS, PAGES 1150-1157;
 DX) SUNSHINE MEADOW ONE HUNDRED AND TWENTY-NINE ADDITION, RECORDED IN BOOK 1 OF PLATS, PAGES 1158-1165;
 DY) SUNSHINE MEADOW ONE HUNDRED AND THIRTY ADDITION, RECORDED IN BOOK 1 OF PLATS, PAGES 1166-1173;
 DZ) SUNSHINE MEADOW ONE HUNDRED AND THIRTY-ONE ADDITION, RECORDED IN BOOK 1 OF PLATS, PAGES 1174-1181;
 EA) SUNSHINE MEADOW ONE HUNDRED AND THIRTY-TWO ADDITION, RECORDED IN BOOK 1 OF PLATS, PAGES 1182-1189;
 EB) SUNSHINE MEADOW ONE HUNDRED AND THIRTY-THREE ADDITION, RECORDED IN BOOK 1 OF PLATS, PAGES 1190-1197;
 EC) SUNSHINE MEADOW ONE HUNDRED AND THIRTY-FOUR ADDITION, RECORDED IN BOOK 1 OF PLATS, PAGES 1198-1205;
 ED) SUNSHINE MEADOW ONE HUNDRED AND THIRTY-FIVE ADDITION, RECORDED IN BOOK 1 OF PLATS, PAGES 1206-1213;
 EE) SUNSHINE MEADOW ONE HUNDRED AND THIRTY-SIX ADDITION, RECORDED IN BOOK 1 OF PLATS, PAGES 1214-1221;
 EF) SUNSHINE MEADOW ONE HUNDRED AND THIRTY-SEVEN ADDITION, RECORDED IN BOOK 1 OF PLATS, PAGES 1222-1229;
 EG) SUNSHINE MEADOW ONE HUNDRED AND THIRTY-EIGHT ADDITION, RECORDED IN BOOK 1 OF PLATS, PAGES 1230-1237;
 EH) SUNSHINE MEADOW ONE HUNDRED AND THIRTY-NINE ADDITION, RECORDED IN BOOK 1 OF PLATS, PAGES 1238-1245;
 EI) SUNSHINE MEADOW ONE HUNDRED AND FORTY ADDITION, RECORDED IN BOOK 1 OF PLATS, PAGES 1246-1253;
 EJ) SUNSHINE MEADOW ONE HUNDRED AND FORTY-ONE ADDITION, RECORDED IN BOOK 1 OF PLATS, PAGES 1254-1261;
 EK) SUNSHINE MEADOW ONE HUNDRED AND FORTY-TWO ADDITION, RECORDED IN BOOK 1 OF PLATS, PAGES 1262-1269;
 EL) SUNSHINE MEADOW ONE HUNDRED AND FORTY-THREE ADDITION, RECORDED IN BOOK 1 OF PLATS, PAGES 1270-1277;
 EM) SUNSHINE MEADOW ONE HUNDRED AND FORTY-FOUR ADDITION, RECORDED IN BOOK 1 OF PLATS, PAGES 1278-1285;
 EN) SUNSHINE MEADOW ONE HUNDRED AND FORTY-FIVE ADDITION, RECORDED IN BOOK 1 OF PLATS, PAGES 1286-1293;
 EO) SUNSHINE MEADOW ONE HUNDRED AND FORTY-SIX ADDITION, RECORDED IN BOOK 1 OF PLATS, PAGES 1294-1301;
 EP) SUNSHINE MEADOW ONE HUNDRED AND FORTY-SEVEN ADDITION, RECORDED IN BOOK 1 OF PLATS, PAGES 1302-1309;
 EQ) SUNSHINE MEADOW ONE HUNDRED AND FORTY-EIGHT ADDITION, RECORDED IN BOOK 1 OF PLATS, PAGES 1310-1317;
 ER) SUNSHINE MEADOW ONE HUNDRED AND FORTY-NINE ADDITION, RECORDED IN BOOK 1 OF PLATS, PAGES 1318-1325;
 ES) SUNSHINE MEADOW ONE HUNDRED AND FIFTY ADDITION, RECORDED IN BOOK 1 OF PLATS, PAGES 1326-1333;
 ET) SUNSHINE MEADOW ONE HUNDRED AND FIFTY-ONE ADDITION, RECORDED IN BOOK 1 OF PLATS, PAGES 1334-1341;
 EU) SUNSHINE MEADOW ONE HUNDRED AND FIFTY-TWO ADDITION, RECORDED IN BOOK 1 OF PLATS, PAGES 1342-1349;
 EV) SUNSHINE MEADOW ONE HUNDRED AND FIFTY-THREE ADDITION, RECORDED IN BOOK 1 OF PLATS, PAGES 1350-1357;
 EW) SUNSHINE MEADOW ONE HUNDRED AND FIFTY-FOUR ADDITION, RECORDED IN BOOK 1 OF PLATS, PAGES 1358-1365;
 EX) SUNSHINE MEADOW ONE HUNDRED AND FIFTY-FIVE ADDITION, RECORDED IN BOOK 1 OF PLATS, PAGES 1366-1373;
 EY) SUNSHINE MEADOW ONE HUNDRED AND FIFTY-SIX ADDITION, RECORDED IN BOOK 1 OF PLATS, PAGES 1374-1381;
 EZ) SUNSHINE MEADOW ONE HUNDRED AND FIFTY-SEVEN ADDITION, RECORDED IN BOOK 1 OF PLATS, PAGES 1382-1389;
 FA) SUNSHINE MEADOW ONE HUNDRED AND FIFTY-EIGHT ADDITION, RECORDED IN BOOK 1 OF PLATS, PAGES 1390-1397;
 FB) SUNSHINE MEADOW ONE HUNDRED AND FIFTY-NINE ADDITION, RECORDED IN BOOK 1 OF PLATS, PAGES 1398-1405;
 FC) SUNSHINE MEADOW ONE HUNDRED AND SIXTY ADDITION, RECORDED IN BOOK 1 OF PLATS, PAGES 1406-1413;
 FD) SUNSHINE MEADOW ONE HUNDRED AND SIXTY-ONE ADDITION, RECORDED IN BOOK 1 OF PLATS, PAGES 1414-1421;
 FE) SUNSHINE MEADOW ONE HUNDRED AND SIXTY-TWO ADDITION, RECORDED IN BOOK 1 OF PLATS, PAGES 1422-1429;
 FF) SUNSHINE MEADOW ONE HUNDRED AND SIXTY-THREE ADDITION, RECORDED IN BOOK 1 OF PLATS, PAGES 1430-1437;
 FG) SUNSHINE MEADOW ONE HUNDRED AND SIXTY-FOUR ADDITION, RECORDED IN BOOK 1 OF PLATS, PAGES 1438-1445;
 FH) SUNSHINE MEADOW ONE HUNDRED AND SIXTY-FIVE ADDITION, RECORDED IN BOOK 1 OF PLATS, PAGES 1446-1453;
 FI) SUNSHINE MEADOW ONE HUNDRED AND SIXTY-SIX ADDITION, RECORDED IN BOOK 1 OF PLATS, PAGES 1454-1461;
 FJ) SUNSHINE MEADOW ONE HUNDRED AND SIXTY-SEVEN ADDITION, RECORDED IN BOOK 1 OF PLATS, PAGES 1462-1469;
 FK) SUNSHINE MEADOW ONE HUNDRED AND SIXTY-EIGHT ADDITION, RECORDED IN BOOK 1 OF PLATS, PAGES 1470-1477;
 FL) SUNSHINE MEADOW ONE HUNDRED AND SIXTY-NINE ADDITION, RECORDED IN BOOK 1 OF PLATS, PAGES 1478-1485;
 FM) SUNSHINE MEADOW ONE HUNDRED AND SEVENTY ADDITION, RECORDED IN BOOK 1 OF PLATS, PAGES 1486-1493;
 FN) SUNSHINE MEADOW ONE HUNDRED AND SEVENTY-ONE ADDITION, RECORDED IN BOOK 1 OF PLATS, PAGES 1494-1501;
 FO) SUNSHINE MEADOW ONE HUNDRED AND SEVENTY-TWO ADDITION, RECORDED IN BOOK 1 OF PLATS, PAGES 1502-1509;
 FP) SUNSHINE MEADOW ONE HUNDRED AND SEVENTY-THREE ADDITION, RECORDED IN BOOK 1 OF PLATS, PAGES 1510-1517;
 FQ) SUNSHINE MEADOW ONE HUNDRED AND SEVENTY-FOUR ADDITION, RECORDED IN BOOK 1 OF PLATS, PAGES 1518-1525;
 FR) SUNSHINE MEADOW ONE HUNDRED AND SEVENTY-FIVE ADDITION, RECORDED IN BOOK 1 OF PLATS, PAGES 1526-1533;
 FS) SUNSHINE MEADOW ONE HUNDRED AND SEVENTY-SIX ADDITION, RECORDED IN BOOK 1 OF PLATS, PAGES 1534-1541;
 FT) SUNSHINE MEADOW ONE HUNDRED AND SEVENTY-SEVEN ADDITION, RECORDED IN BOOK 1 OF PLATS, PAGES 1542-1549;
 FU) SUNSHINE MEADOW ONE HUNDRED AND SEVENTY-EIGHT ADDITION, RECORDED IN BOOK 1 OF PLATS, PAGES 1550-1557;
 FV) SUNSHINE MEADOW ONE HUNDRED AND SEVENTY-NINE ADDITION, RECORDED IN BOOK 1 OF PLATS, PAGES 1558-1565;
 FW) SUNSHINE MEADOW ONE HUNDRED AND EIGHTY ADDITION, RECORDED IN BOOK 1 OF PLATS, PAGES 1566-1573;
 FX) SUNSHINE MEADOW ONE HUNDRED AND EIGHTY-ONE ADDITION, RECORDED IN BOOK 1 OF PLATS, PAGES 1574-1581;
 FY) SUNSHINE MEADOW ONE HUNDRED AND EIGHTY-TWO ADDITION, RECORDED IN BOOK 1 OF PLATS, PAGES 1582-1589;
 FZ) SUNSHINE MEADOW ONE HUNDRED AND EIGHTY-THREE ADDITION, RECORDED IN BOOK 1 OF PLATS, PAGES 1590-1597;
 GA) SUNSHINE MEADOW ONE HUNDRED AND EIGHTY-FOUR ADDITION, RECORDED IN BOOK 1 OF PLATS, PAGES 1598-1605;
 GB) SUNSHINE MEADOW ONE HUNDRED AND EIGHTY-FIVE ADDITION, RECORDED IN BOOK 1 OF PLATS, PAGES 1606-1613;
 GC) SUNSHINE MEADOW ONE HUNDRED AND EIGHTY-SIX ADDITION, RECORDED IN BOOK 1 OF PLATS, PAGES 1614-1621;
 GD) SUNSHINE MEADOW ONE HUNDRED AND EIGHTY-SEVEN ADDITION, RECORDED IN BOOK 1 OF PLATS, PAGES 1622-1629;
 GE) SUNSHINE MEADOW ONE HUNDRED AND EIGHTY-EIGHT ADDITION, RECORDED IN BOOK 1 OF PLATS, PAGES 1630-1637;
 GF) SUNSHINE MEADOW ONE HUNDRED AND EIGHTY-NINE ADDITION, RECORDED IN BOOK 1 OF PLATS, PAGES 1638-1645;
 GG) SUNSHINE MEADOW ONE HUNDRED AND NINETY ADDITION, RECORDED IN BOOK 1 OF PLATS, PAGES 1646-1653;
 GH) SUNSHINE MEADOW ONE HUNDRED AND NINETY-ONE ADDITION, RECORDED IN BOOK 1 OF PLATS, PAGES 1654-1661;
 GH) SUNSHINE MEADOW ONE HUNDRED AND NINETY-TWO ADDITION, RECORDED IN BOOK 1 OF PLATS, PAGES 1662-1669;
 GI) SUNSHINE MEADOW ONE HUNDRED AND NINETY-THREE ADDITION, RECORDED IN BOOK 1 OF PLATS, PAGES 1670-1677;
 GJ) SUNSHINE MEADOW ONE HUNDRED AND NINETY-FOUR ADDITION, RECORDED IN BOOK 1 OF PLATS, PAGES 1678-1685;
 GK) SUNSHINE MEADOW ONE HUNDRED AND NINETY-FIVE ADDITION, RECORDED IN BOOK 1 OF PLATS, PAGES 1686-1693;
 GL) SUNSHINE MEADOW ONE HUNDRED AND NINETY-SIX ADDITION, RECORDED IN BOOK 1 OF PLATS, PAGES 1694-1701;
 GM) SUNSHINE MEADOW ONE HUNDRED AND NINETY-SEVEN ADDITION, RECORDED IN BOOK 1 OF PLATS, PAGES 17

LINE NUMBER	BEARING	LENGTH
11	S89°23'56"E	307.88'
12	S33°57'00"W	184.43'
13	S00°00'00"W	57.97'
14	S00°00'00"W	57.97'
15	S13°31'11"W	53.31'

CURVE	RADIUS	LENGTH	PRO. DIST.	CHORD BEG.	CHORD END
C1	20.00'	34.46'	30.36'	S84°13'27"W	89.23' AS
C2	22.00'	38.16'	33.53'	N12°28'27"W	72.20' AS
C3	24.00'	42.00'	37.24'	N12°28'27"W	72.20' AS
C4	26.00'	46.00'	41.00'	N12°28'27"W	72.20' AS
C5	28.00'	50.00'	44.72'	N12°28'27"W	72.20' AS
C6	30.00'	54.00'	48.48'	N12°28'27"W	72.20' AS
C7	32.00'	58.00'	52.24'	N12°28'27"W	72.20' AS
C8	34.00'	62.00'	56.00'	N12°28'27"W	72.20' AS
C9	36.00'	66.00'	59.76'	N12°28'27"W	72.20' AS
C10	38.00'	70.00'	63.52'	N12°28'27"W	72.20' AS
C11	40.00'	74.00'	67.28'	N12°28'27"W	72.20' AS
C12	42.00'	78.00'	71.04'	N12°28'27"W	72.20' AS
C13	44.00'	82.00'	74.80'	N12°28'27"W	72.20' AS
C14	46.00'	86.00'	78.56'	N12°28'27"W	72.20' AS
C15	48.00'	90.00'	82.32'	N12°28'27"W	72.20' AS
C16	50.00'	94.00'	86.08'	N12°28'27"W	72.20' AS
C17	52.00'	98.00'	89.84'	N12°28'27"W	72.20' AS
C18	54.00'	102.00'	93.60'	N12°28'27"W	72.20' AS
C19	56.00'	106.00'	97.36'	N12°28'27"W	72.20' AS
C20	58.00'	110.00'	101.12'	N12°28'27"W	72.20' AS
C21	60.00'	114.00'	104.88'	N12°28'27"W	72.20' AS
C22	62.00'	118.00'	108.64'	N12°28'27"W	72.20' AS
C23	64.00'	122.00'	112.40'	N12°28'27"W	72.20' AS
C24	66.00'	126.00'	116.16'	N12°28'27"W	72.20' AS
C25	68.00'	130.00'	119.92'	N12°28'27"W	72.20' AS
C26	70.00'	134.00'	123.68'	N12°28'27"W	72.20' AS
C27	72.00'	138.00'	127.44'	N12°28'27"W	72.20' AS
C28	74.00'	142.00'	131.20'	N12°28'27"W	72.20' AS
C29	76.00'	146.00'	134.96'	N12°28'27"W	72.20' AS
C30	78.00'	150.00'	138.72'	N12°28'27"W	72.20' AS
C31	80.00'	154.00'	142.48'	N12°28'27"W	72.20' AS
C32	82.00'	158.00'	146.24'	N12°28'27"W	72.20' AS
C33	84.00'	162.00'	150.00'	N12°28'27"W	72.20' AS
C34	86.00'	166.00'	153.76'	N12°28'27"W	72.20' AS
C35	88.00'	170.00'	157.52'	N12°28'27"W	72.20' AS
C36	90.00'	174.00'	161.28'	N12°28'27"W	72.20' AS
C37	92.00'	178.00'	165.04'	N12°28'27"W	72.20' AS
C38	94.00'	182.00'	168.80'	N12°28'27"W	72.20' AS
C39	96.00'	186.00'	172.56'	N12°28'27"W	72.20' AS
C40	98.00'	190.00'	176.32'	N12°28'27"W	72.20' AS
C41	100.00'	194.00'	180.08'	N12°28'27"W	72.20' AS
C42	102.00'	198.00'	183.84'	N12°28'27"W	72.20' AS
C43	104.00'	202.00'	187.60'	N12°28'27"W	72.20' AS
C44	106.00'	206.00'	191.36'	N12°28'27"W	72.20' AS
C45	108.00'	210.00'	195.12'	N12°28'27"W	72.20' AS
C46	110.00'	214.00'	198.88'	N12°28'27"W	72.20' AS
C47	112.00'	218.00'	202.64'	N12°28'27"W	72.20' AS
C48	114.00'	222.00'	206.40'	N12°28'27"W	72.20' AS
C49	116.00'	226.00'	210.16'	N12°28'27"W	72.20' AS
C50	118.00'	230.00'	213.92'	N12°28'27"W	72.20' AS
C51	120.00'	234.00'	217.68'	N12°28'27"W	72.20' AS
C52	122.00'	238.00'	221.44'	N12°28'27"W	72.20' AS
C53	124.00'	242.00'	225.20'	N12°28'27"W	72.20' AS
C54	126.00'	246.00'	228.96'	N12°28'27"W	72.20' AS
C55	128.00'	250.00'	232.72'	N12°28'27"W	72.20' AS
C56	130.00'	254.00'	236.48'	N12°28'27"W	72.20' AS
C57	132.00'	258.00'	240.24'	N12°28'27"W	72.20' AS
C58	134.00'	262.00'	244.00'	N12°28'27"W	72.20' AS
C59	136.00'	266.00'	247.76'	N12°28'27"W	72.20' AS
C60	138.00'	270.00'	251.52'	N12°28'27"W	72.20' AS
C61	140.00'	274.00'	255.28'	N12°28'27"W	72.20' AS
C62	142.00'	278.00'	259.04'	N12°28'27"W	72.20' AS
C63	144.00'	282.00'	262.80'	N12°28'27"W	72.20' AS
C64	146.00'	286.00'	266.56'	N12°28'27"W	72.20' AS
C65	148.00'	290.00'	270.32'	N12°28'27"W	72.20' AS
C66	150.00'	294.00'	274.08'	N12°28'27"W	72.20' AS
C67	152.00'	298.00'	277.84'	N12°28'27"W	72.20' AS
C68	154.00'	302.00'	281.60'	N12°28'27"W	72.20' AS
C69	156.00'	306.00'	285.36'	N12°28'27"W	72.20' AS
C70	158.00'	310.00'	289.12'	N12°28'27"W	72.20' AS
C71	160.00'	314.00'	292.88'	N12°28'27"W	72.20' AS
C72	162.00'	318.00'	296.64'	N12°28'27"W	72.20' AS
C73	164.00'	322.00'	300.40'	N12°28'27"W	72.20' AS
C74	166.00'	326.00'	304.16'	N12°28'27"W	72.20' AS
C75	168.00'	330.00'	307.92'	N12°28'27"W	72.20' AS
C76	170.00'	334.00'	311.68'	N12°28'27"W	72.20' AS
C77	172.00'	338.00'	315.44'	N12°28'27"W	72.20' AS
C78	174.00'	342.00'	319.20'	N12°28'27"W	72.20' AS
C79	176.00'	346.00'	322.96'	N12°28'27"W	72.20' AS
C80	178.00'	350.00'	326.72'	N12°28'27"W	72.20' AS
C81	180.00'	354.00'	330.48'	N12°28'27"W	72.20' AS
C82	182.00'	358.00'	334.24'	N12°28'27"W	72.20' AS
C83	184.00'	362.00'	338.00'	N12°28'27"W	72.20' AS
C84	186.00'	366.00'	341.76'	N12°28'27"W	72.20' AS
C85	188.00'	370.00'	345.52'	N12°28'27"W	72.20' AS
C86	190.00'	374.00'	349.28'	N12°28'27"W	72.20' AS
C87	192.00'	378.00'	353.04'	N12°28'27"W	72.20' AS
C88	194.00'	382.00'	356.80'	N12°28'27"W	72.20' AS
C89	196.00'	386.00'	360.56'	N12°28'27"W	72.20' AS
C90	198.00'	390.00'	364.32'	N12°28'27"W	72.20' AS
C91	200.00'	394.00'	368.08'	N12°28'27"W	72.20' AS
C92	202.00'	398.00'	371.84'	N12°28'27"W	72.20' AS
C93	204.00'	402.00'	375.60'	N12°28'27"W	72.20' AS
C94	206.00'	406.00'	379.36'	N12°28'27"W	72.20' AS
C95	208.00'	410.00'	383.12'	N12°28'27"W	72.20' AS
C96	210.00'	414.00'	386.88'	N12°28'27"W	72.20' AS
C97	212.00'	418.00'	390.64'	N12°28'27"W	72.20' AS
C98	214.00'	422.00'	394.40'	N12°28'27"W	72.20' AS
C99	216.00'	426.00'	398.16'	N12°28'27"W	72.20' AS
C100	218.00'	430.00'	401.92'	N12°28'27"W	72.20' AS
C101	220.00'	434.00'	405.68'	N12°28'27"W	72.20' AS
C102	222.00'	438.00'	409.44'	N12°28'27"W	72.20' AS
C103	224.00'	442.00'	413.20'	N12°28'27"W	72.20' AS
C104	226.00'	446.00'	416.96'	N12°28'27"W	72.20' AS
C105	228.00'	450.00'	420.72'	N12°28'27"W	72.20' AS
C106	230.00'	454.00'	424.48'	N12°28'27"W	72.20' AS
C107	232.00'	458.00'	428.24'	N12°28'27"W	72.20' AS
C108	234.00'	462.00'	432.00'	N12°28'27"W	72.20' AS
C109	236.00'	466.00'	435.76'	N12°28'27"W	72.20' AS
C110	238.00'	470.00'	439.52'	N12°28'27"W	72.20' AS
C111	240.00'	474.00'	443.28'	N12°28'27"W	72.20' AS
C112	242.00'	478.00'	447.04'	N12°28'27"W	72.20' AS
C113	244.00'	482.00'	450.80'	N12°28'27"W	72.20' AS
C114	246.00'	486.00'	454.56'	N12°28'27"W	72.20' AS
C115	248.00'	490.00'	458.32'	N12°28'27"W	72.20' AS
C116	250.00'	494.00'	462.08'	N12°28'27"W	72.20' AS
C117	252.00'	498.00'	465.84'	N12°28'27"W	72.20' AS
C118	254.00'	502.00'	469.60'	N12°28'27"W	72.20' AS
C119	256.00'	506.00'	473.36'	N12°28'27"W	72.20' AS
C120	258.00'	510.00'	477.12'	N12°28'27"W	72.20' AS
C121	260.00'	514.00'	480.88'	N12°28'27"W	72.20' AS
C122	262.00'	518.00'	484.64'	N12°28'27"W	72.20' AS
C123	264.00'	522.00'	488.40'	N12°28'27"W	72.20' AS
C124	266.00'	526.00'	492.16'	N12°28'27"W	72.20' AS
C125	268.00'	530.00'	495.92'	N12°28'27"W	72.20' AS
C126	270.00'	534.00'	499.68'	N12°28'27"W	72.20' AS
C127	272.00'	538.00'	503.44'	N12°28'27"W	72.20' AS
C128	274.00'	542.00'	507.20'	N12°28'27"W	72.20' AS
C129	276.00'	546.00'	510.96'	N12°28'27"W	72.20' AS
C130	278.00'	550.00'	514.72'	N12°28'27"W	72.20' AS
C131	280.00'	554.00'	518.48'	N12°28'27"W	72.20' AS
C132	282.00'	558.00'	522.24'	N12°28'27"W	72.20' AS
C133	284.00'	562.00'	526.00'	N12°28'27"W	72.20' AS
C134	286.00'	566.00'	529.76'	N12°28'27"W	72.20' AS
C135	288.00'	570.00'	533.52'	N12°28'27"W	72.20' AS
C136	290.00'	574.00'	537.28'	N12°28'27"W	72.20' AS
C137	292.00'	578.00'	541.04'	N12°28'27"W	72.20' AS
C138	294.00'	582.00'	544.80'	N12°28'27"W	72.20' AS
C139	296.00'	586.00'	548.56'	N12°28'27"W	72.20' AS
C140	298.00'	590.00'	552.32'	N12°28'27"W	72.20' AS
C141	300.00'	594.00'	556.08'	N12°28'27"W	72.20' AS
C142	302.00'	598.00'	559.84'	N12°28'27"W	72.20' AS
C143	304.00'	602.00'	563.60'	N12°28'27"W	72.20' AS
C144	306.00'	606.00'	567.36'	N12°28'27"W	72.20' AS
C145	308.00'	610.00'	571.12'	N12°28'27"W	72.20' AS
C146	310.00'	614.00'	574.88'	N12°28'27"W	72.20' AS
C147	312.00'	618.00'	578.64'	N12°28'27"W	72.20' AS
C148	314.00'	622.00'	582.40'	N12°28'27"W	72.20' AS
C149	316.00'	626.00'	586.16'	N12°28'27"W	72.20' AS
C150	318.00'	630.00'	589.92'	N12°28'27"W	72.20' AS
C151	320.00'	634.00'	593.68'	N12°28'27"W	72.20' AS
C152	322.00'	638.00'	597.44'	N12°28'27"W	72.20' AS
C153	324.00'	642.00'	601.20'	N12°28'27"W	72.20' AS
C154	326.00'	646.00'	604.96'	N12°28'27"W	72.20' AS
C155	328.00'	650.00'	608.72'	N12°28'27"W	72.20' AS
C156	330.00'	654.00'	612.48'	N12°28'27"W	72.20' AS
C157	332.00'	658.00'	616.24'	N12°28'27"W	72.20' AS
C158	334.00'	662.00'	620.00'	N12°28'27"W	72.20' AS
C159	336.00'	666.00'	623.76'	N12°28'27"W	72.20' AS
C160	338.00'	670.00'	627.52'	N12°28'27"W	72.20' AS
C161	340.00'	674.00'	631.28'	N12°28'27"W	72.20' AS
C162	342.00'	678.00'	635.04'	N12°28'27"W	72.20' AS
C163	344.00'	682.00'	638.80'	N12°28'27"W	72.20' AS
C164	346.00'	686.00'	642.56'	N12°28'27"W	72.20' AS
C165	348.00'	690.00'	646.32'	N12°28'27"W	72.20' AS
C166	350.00'	694.00'	650.08'	N12°28'27"W	72.20' AS
C167	352.00'	698.00'	653.84'	N12°28'27"W	72.20' AS
C168	354.00'	702.00'	657.60'	N12°28'27"W	72.20' AS
C169	356.00'	706.00'	661.36'	N12°28'27"W	72.20' AS
C170	358.00'	710.00'</			

**CITY COUNCIL
STAFF REPORT**

DATE: November 16, 2010
FROM: Christopher H. Bates, Engineering Project Manager 
SUBJECT: Hawk's Nest 4th Addition: Acceptance of Carrington Lane Improvements

DECISION POINT

Staff is requesting the following:

1. City Council acceptance of the installed public road improvements for Carrington Lane in the Hawk's Nest 4th Addition.

HISTORY

- a. Applicant: Hayden, LLC
1400 Northwood Center Court
Coeur d'Alene, ID 83814
- b. Location: West of Atlas Road and north of Hanley Avenue.
- c. Previous Action:
 1. Final plat approval of the Hawk's Nest 4th Addition and subdivision agreement for uninstalled improvements in December 2009.
 2. Acceptance of the installed improvements in the development for all but Carrington Lane, January 2010.

FINANCIAL ANALYSIS

Acceptance of the road improvements allows for the return to the City of the subdivision impact fees (\$47,250.00) that were utilized by the developer as a portion of their Subdivision Agreement security (Dec. 2009). These fees which were due at final plat approval will be placed into the impact fees section of the Special Resources Fund.

PERFORMANCE ANALYSIS

This acceptance completes the final portion of the Hawk's Nest improvements that were outstanding. The balance of the infrastructure was installed in 2009 and accepted in January 2010.

DECISION POINT RECOMMENDATION

1. Accept the installed public improvements on Carrington Lane in the Hawk's Nest 4th Addition, and, direct staff to rebate the impact fees to the appropriate City fund.

ANNOUNCEMENTS

OTHER COMMITTEE MINUTES
(Requiring Council Action)

**November 8, 2010
PUBLIC WORKS COMMITTEE
MINUTES**

COMMITTEE MEMBERS PRESENT

Council Member Al Hassell
Council Member Woody McEvers
Council Member Deanna Goodlander

STAFF PRESENT

Jon Ingalls, Deputy City Admin.
Amy Ferguson, Executive Assistant
Tim Martin, Street Superintendent
Troy Tymesen, Finance Director
Dennis Grant, Eng. Project Mgr
Sid Fredrickson, WW Superintendent
Steve Childers, PD Captain
Wendy Gabriel, City Administrator
Warren Wilson, Deputy City Atty.
Gordon Dobler, City Engineer

GUESTS: Tom Haslinger, CDA Press
Chief Keith Hutchinson – CdA Tribe

**Item 1 2010-2011 Snow Plan
Consent Calendar**

Tim Martin, Street Superintendent, presented a request for council approval of the 2010-2011 Snow Plan. Mr. Martin explained in his staff report that the Snow Plan is an annual “housekeeping” action that requires between 5 to 10 hours of staff time and printing costs of approximately \$150.00. Citizen and staff mutually benefit from a clear understanding of city snow removal policies and responsibilities. The Snow Plan is distributed in various forms such as pamphlets, newspaper articles, and made available on the city website. It is the city’s primary means of educating the public on city snow removal policies.

Mr. Martin said that the changes proposed for the 2010-2011 Snow Plan include adding new and/or extended streets, new subdivisions, and cul-de-sacs. The 38 hour goal for a city-wide plow will remain the same.

Councilman Goodlander commented that the 38 hour city-wide plow standard is an amazing process. Mr. Martin noted that they plow over 250 lane miles, including about 79 miles of arterials that require five to six passes with a snow plow.

MOTION by McEvers, seconded by Goodlander, to recommend Council approval of the 2009-2010 Snow Plan. Motion carried.

**Item 2 Approval of Change Order Nos. 1 – 3 for the 12th Street, 13th Street, and Mary Lane Improvement Project
Consent Calendar**

Dennis Grant, Engineering Project Manager, presented a request for council approval of Change Order Nos. 1-3 to balance the final quantities for this year’s 12th Street, 13th Street, and Mary Lane Improvement Project.

Mr. Grant noted that the total cost of the change orders is \$225,980.51, and the increase in the project cost will be shared with the City of Coeur d'Alene's Utility Departments and Impact Fees. The project did not exceed the City of Coeur d'Alene budget of \$650,000.00. Mr. Grant noted that the main reason for the increase in the final contract price was costs incurred by adding the 15th Street at Harrison Avenue surface improvements for the traffic signalization project. Other reasons were unexpected upgrades in the water service lines and wastewater improvements.

Councilman Goodlander asked if the city had addressed the driveway transition issues that had been raised by a few citizens. Mr. Dobler said that they have been addressed in every situation, but there are some cases in which the property owner might not have been happy with the results. There were two asphalt driveways where the asphalt was extended to make sure that the property owners were satisfied, but they did end up with something that was steeper than the property owners wanted.

MOTION by McEvers, seconded by Goodlander, to recommend Council approval of Resolution No. 10-044, approving Change Order Nos. 1-3 for the 12th Street, 13th Street, and Mary Lane Improvement Project, in the amount of \$225,980.51, for a total cost of \$647,208.12.

Item 3 Wastewater Capital Program & Rate Analyses Citizen Advisory Committee

Sid Fredrickson, Wastewater Superintendent, presented a recommendation that Council appoint a citizens advisory committee to provide community input in both the timing and magnitude of the long-range capital improvement program and accompanying rate impacts. Mr. Fredrickson explained in his staff report that significant capital improvements are mandated to reduce oxygen demanding substances from the city's treated wastewater effluent to protect water quality in the Spokane River and Spokane (Long) Lake. Many wastewater utilities are engaging their community stakeholders and ratepayer representatives when they are facing the challenges of potentially significant rate increases, short compliance schedules and reduced growth rates during economic downturns. It is felt to be essential to have a broad spectrum of community support in advising the city in tailoring, formulating, and implementing the necessary capital improvement program and any required rate increases. Such a process resulted in the successful development and implementation of the city's stormwater utility.

Mr. Fredrickson noted that the rate analysis will take about 1 year to complete and it would be great timing if the citizen's advisory committee were appointed in time to participate in the kick-off workshop. He further commented that he thinks there will be a lot of pressure on the city council if there are substantial rate increases and our community doesn't understand the reasoning behind it.

Councilman McEvers said that he served on the last rate study committee many years ago and he remembers learning a lot. He thinks it would be great if they can get people to do it, but it may be hard to find persons who will be willing to serve on the committee. Mr. Fredrickson said that in the presentations he has attended, he has learned that those utilities that chose to have substantial rate increases without talking to their constituents have faced difficulty. There were also some good examples presented of how community involvement led to successful programs.

MOTION by Goodlander, seconded by McEvers, to recommend that the Mayor appoint a citizens advisory committee to provide community input in both the timing and magnitude of the long-range capital improvement program and accompanying rate impacts.

Item 4 Agreement with the Coeur d'Alene Tribe re: Handling of Tribal Warrants
Consent Calendar (see Motion below)

Steve Childers, Police Department Captain, and Keith Hutchison, Chief of the Coeur d'Alene Tribal Police Department, presented a request to enter into a Memorandum of Agreement with the Coeur d'Alene Tribe allowing City of Coeur d'Alene police officers to effectuate arrests for warrants issued by the Coeur d'Alene Tribal Court.

Captain Childers noted in his staff report that, historically, any warrant issued by the Coeur d'Alene Tribal Court was not enforceable outside designated reservation lands. Currently City of Coeur d'Alene police officers do not arrest Tribal members for warrants issued by an Indian tribal court. The financial impact would be limited to creating, documenting, and updating policies and procedures to implement the agreement. Kootenai County has also entered into a very similar agreement with the Tribe.

Captain Childers further noted in his staff report that the agreement will enhance the ability of law enforcement agencies to work together in locating and arresting wanted persons. The agreement will put a stop to the criminal suspect's ability to flee the jurisdiction of the Tribal Court and will enhance law enforcement's detection, intervention, and apprehension of wanted crime suspects.

Councilman McEvers asked if this agreement would work both ways. Chief Hutchinson said that it does and that his officers are cross-deputized with Kootenai and transport suspects up to Kootenai County at no cost.

MOTION by Goodlander , seconded by McEvers, to recommend that Council authorize an agreement with the Coeur d'Alene Tribe allowing the city's police officers to make arrest on warrants issued by the Coeur d'Alene Tribal Court, to be brought forward to the full council on the CONSENT CALENDAR after the tribe has signed the Memorandum of Understanding.

The meeting adjourned at 4:22 p.m.

Respectfully submitted,

Amy C. Ferguson
Public Works Committee Liaison

- Neighborhood groups Environmental – KEA
- Other government groups Senior Citizens
- Avista Disadvantaged representatives

Council will undoubtedly be able to determine an appropriate and balanced list of constituents.

This committee should be constituted as soon as possible to be able to participate in the kickoff workshop with our rate analyst.

DECISION POINT:

Council may wish to appoint a citizens advisory committee to provide community input in both the timing and magnitude of the long-range capital improvement program and accompanying rate impacts.

OTHER BUSINESS

2. **Physical constraints:**

There are no significant topographical or physical constraints.

BASIC LEGAL THRESHOLDS:

1. **Area of City Impact:**

The subject property is within the Cœur d'Alene Area of City Impact boundary.

2. **Contiguity with City Boundary:**

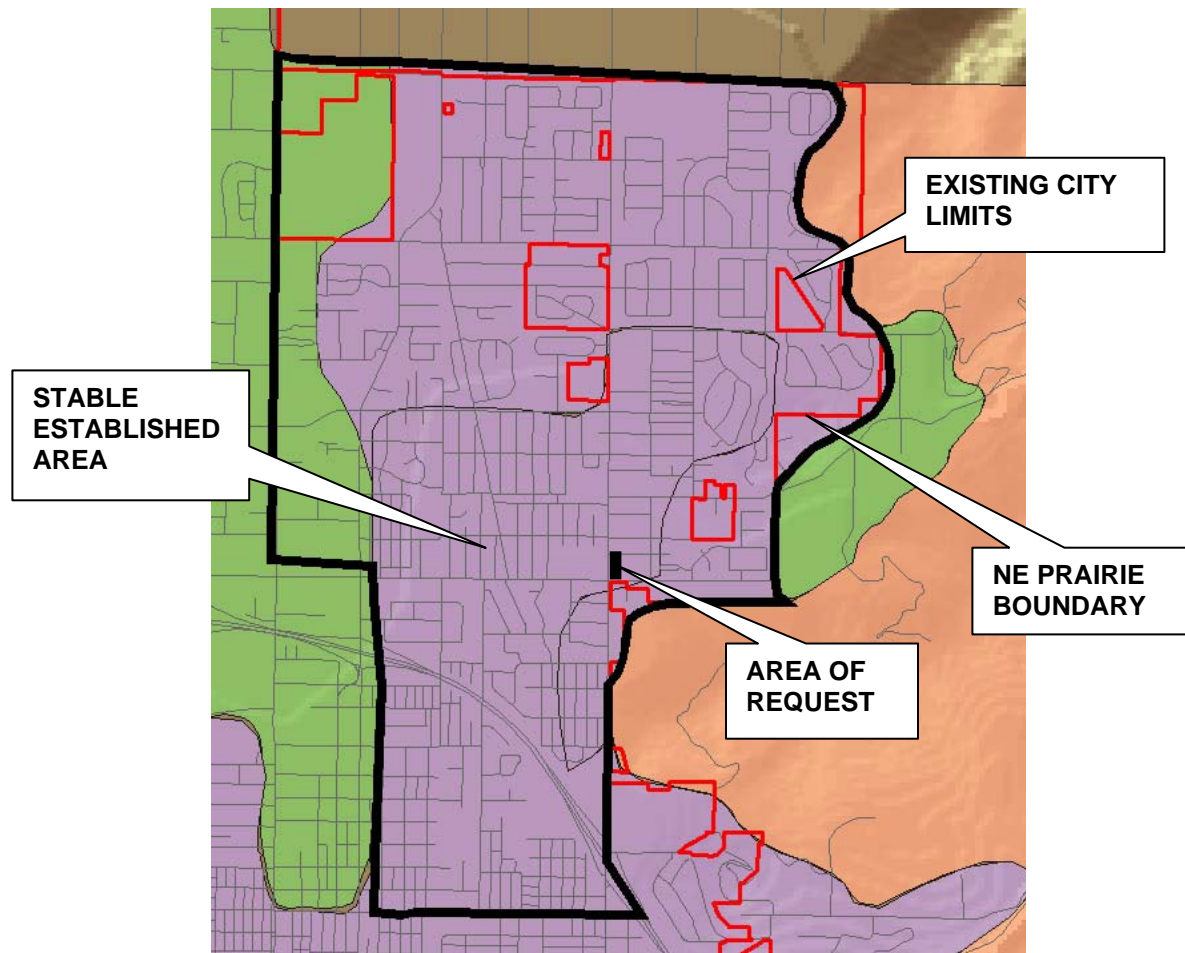
The subject property is contiguous to existing city boundary on the west and north sides of the subject property.

3. **Orderly Growth:**

This request would appear to be a logical extension of the city limits bringing a parcel into the city that is adjacent to the intersection of 15th and Best that would not be able to develop without City water and sewer services.

BASIC PLANNING CONSIDERATIONS:

1. 2007 Comprehensive Plan designation - Stable Established – NE Prairie



A. Stable Established Areas:

These areas are where the character of neighborhoods has largely been established and, in general, should be maintained. The street network, the number of building lots and general land use are not expected to change greatly within the planning period.

B. NE Prairie Neighborhood:

It is typically a stable established housing area with a mix of zoning districts. The majority of this area has been developed. Special care should be given to the areas that remain such as the Nettleton Gulch area, protecting the beauty and value of the hillside and wetlands.

The characteristics of NE Prairie neighborhoods will be:

- That overall density may approach three to four residential units per acre (3-4:1), however, pockets of higher density housing and multi-family units are appropriate in compatible areas.
- Commercial uses are concentrated in existing commercial areas along arterials with neighborhood service nodes where appropriate.
- Natural vegetation is encouraged and should be protected in these areas.
- Pedestrian connections and street trees are encouraged in both existing neighborhoods and developing areas.
- Clustering of smaller lots to preserve large connected open space areas as well as views and vistas are encouraged.
- Incentives will be provided to encourage clustering.

LEGAL STATUS OF SUBJECT PROPERTY:

The subject parcel (Tax Number 20177) has been determined by the Kootenai County Planning and Zoning Department to be a legally created parcel in compliance with the Kootenai County Zoning and Subdivision Ordinances, as verified by the following two letters, dated May 23, 2002 and September 28, 2010. (See Exhibit A May 23rd letter and Exhibit B September 28th letter)

PUBLIC FACILITIES AND SERVICES:

No major issues were identified.

ACTION ALTERNATIVES:

The City Council must consider the following:

- Approve the request, which would allow the applicant to file a formal application for annexation into the City of Coeur d'Alene.
- Deny the request, which would require the applicant to wait at least one year before another Request to Consider Annexation can be filed for the same property.

Exhibit A:



KOOTENAI COUNTY PLANNING DEPARTMENT

May 23, 2002

Ed Morse
Morse & Co.
2101 Lakewood Drive, Suite 225
Coeur d'Alene, ID 83814

RE: STATUS OF TAX NO. 16297, ALSO KNOWN AS PARCEL NO. 50N03W-07-3100

Dear Ed:

I have reviewed the available information on the above-referenced parcel which is approximately 0.973 acres in size. This parcel appears to meet the County's Zoning and Subdivision Ordinance requirements and would be eligible for building permits, provided the requirements of other agencies (Panhandle Health, Highway and Fire Districts) could be met. I have not identified any Zoning or Subdivision deficiencies that are related to this parcel. In addition, the County would support your request for annexation to the City of Coeur d'Alene for this parcel. If you have any questions, please contact me.

Sincerely,

A handwritten signature in black ink, appearing to read "Rand Wichman", written over a horizontal line.

Rand Wichman
Planning Director

Cc: John Stamsos, City of Coeur d'Alene Planning Department

Exhibit B:



**KOOTENAI COUNTY
BUILDING & PLANNING
DEPARTMENT**

September 28, 2010

Ms. Cindy Espe
Advanced Technology Surveying
P.O. Box 3457
Hayden, Idaho 83835

Subject: May 23, 2002 Wichman Letter Re; parcel No. 50N03W-07-3105

Dear Cindy,

Pursuant to your request, we are providing this letter as a follow-up to the May 23, 2002 letter by Mr. Rand Wichman regarding Parcel No. 50N03W-07-3105 (previously known as 50N03W-07-3100). It is our understanding that this request is related to an annexation procedure that is currently underway with the City of Coeur d'Alene.

On May 23, 2002, Mr. Wichman determined Parcel No. 50N03W-07-3105 (previously known as 50N03W-07-3100, which was assigned a new number following a boundary line adjustment) as *"appear(ing) to meet the County's Zoning and Subdivision Ordinance requirements and would be eligible for building permits, provided the requirements of other agencies (Panhandle Health, Highway and Fire Districts) could be met."* Since that time we have identified one modification to this parcel, a boundary line adjustment, which appears to be minor in nature and compliant with County regulations. Therefore, the Building and Planning Department continues to recognize Mr. Wichman's 2002 interpretation.

Best regards,

Scott Clark
Director

Cc: File
Vlad Kryukov

Phone (208) 446-1070 • Fax (208) 446-1071
451 Government Way • P.O. Box 9000 • Coeur d'Alene, ID 83816-9000

