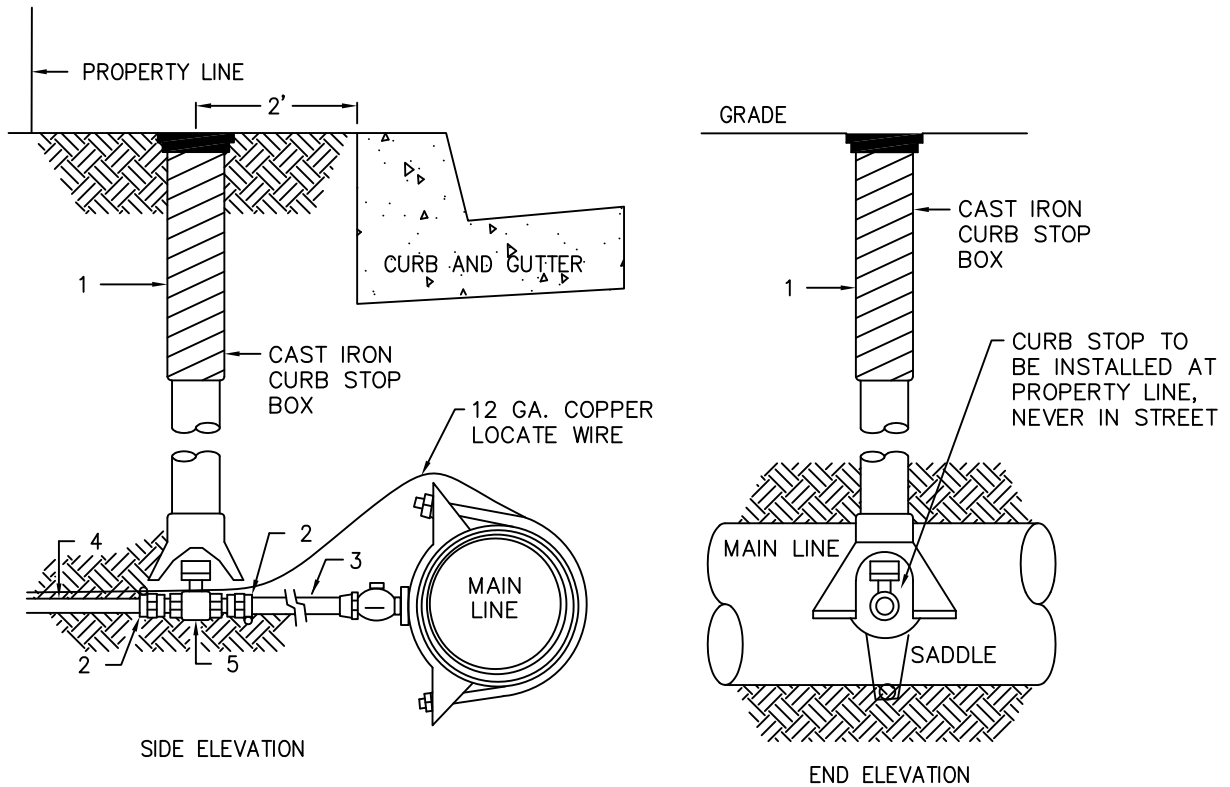


ONLY TO BE USED IN EMERGENCIES OR SAMPLE STATION INSTALLATIONS



APPROVED TAPPING METHOD:

1. ROMAC DOUBLE STAINLESS STEEL SADDLE TAP
2. SEE STD DWG W-1 FOR TAPPING DETAILS

NOTE: CURB STOP BOX SETTINGS

- A. ONLY CAST IRON CURB STOP BOXES SHALL BE USED.
- B. LID SHALL BE AT FINISHED GRADE.
- C. LID SHALL HAVE "WATER" IMPRINTED ON LID.

| ITEM NO. | NO. REQD. | DESCRIPTION |
|----------|-----------|--|
| 1 | 1 | CAST IRON CURB STOP BOX |
| 2 | 3 | 1" BRASS PACK JOINT ASSEMBLY |
| 3 | 1 | 1" x REQD. LENGTH -- USE IRON PIPE SIZE POLYETHYLENE HDPE (250 PSI) |
| 4 | 1 | 1" x REQD. LENGTH (STOPPING AT PROPERTY LINE)- USE PIPE SIZE GALV. OR IRON PIPE SIZE POLYETHYLENE PIPE |
| 5 | 1 | 1" BRASS CURB STOP WITH PACK JOINT ASSEMBLY. |



CITY OF COEUR D'ALENE STANDARD DRAWING

APPROVED BY:

**1" - 2" CURB STOP
C.I. BOX ASSEMBLY**

Chris Bosley
CITY ENGINEER, PE 10604

10/1/24
DATE:

DWG NO.

W-5