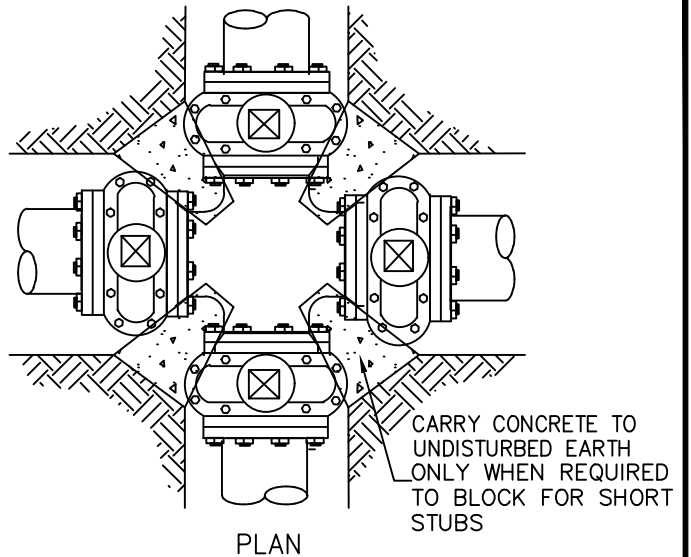
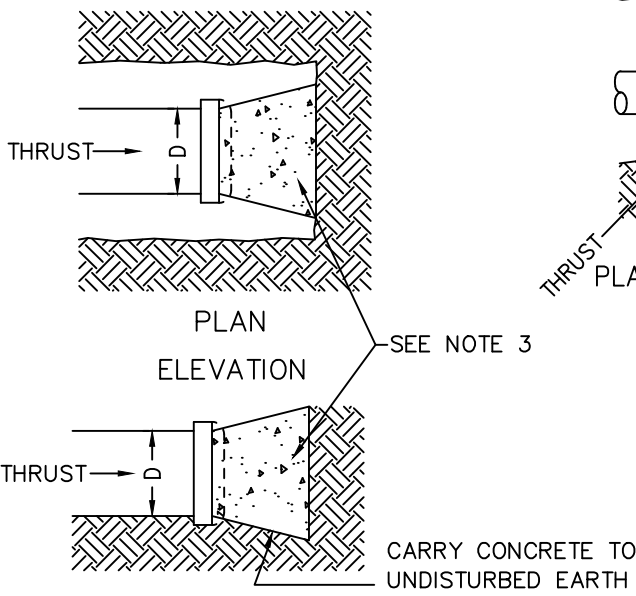


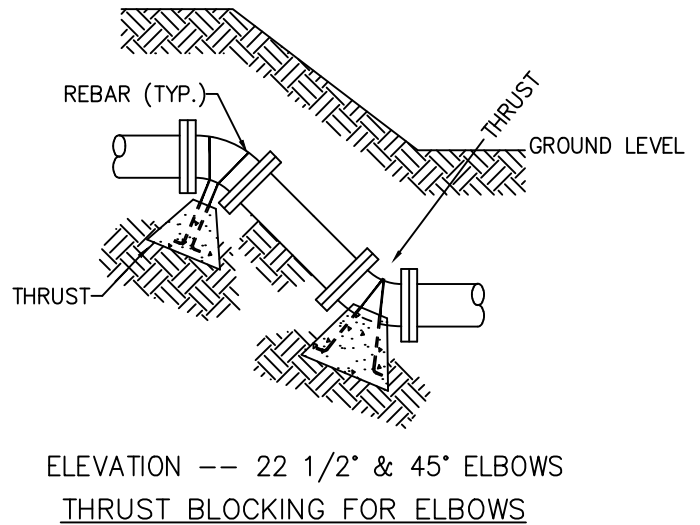
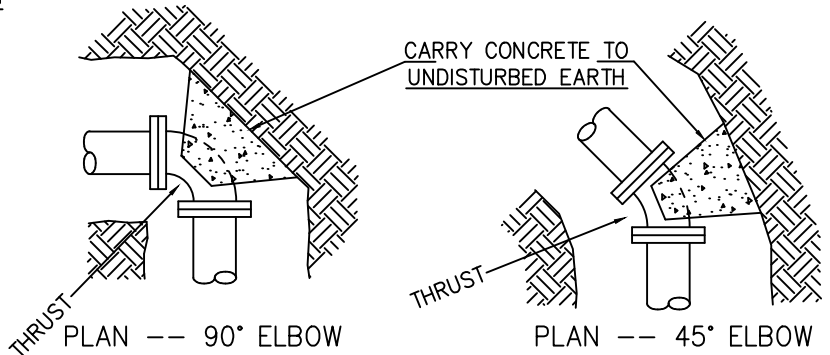
THRUST BLOCKING FOR TEES



THRUST BLOCKING FOR CROSS AS DIRECTED



THRUST BLOCKING FOR CAPS



THRUST BLOCKING FOR ELBOWS

- NOTES:**
1. ALL CONCRETE TO BE MIN 2500 P.S.I.
  2. KEEP CONCRETE CLEAR OF NUTS AND BOLTS WHEN USING FLANGED FITTINGS.
  3. SEE STANDARD DRAWING W-10 FOR THRUST BLOCK BEARING AREAS.
  4. USE MIN 4 MILL PLASTIC WRAPPED AGAINST FITTINGS TO PROTECT BOLTS.
  5. ECOLOGY BLOCKS MAY BE USED IF WITH PRIOR APPROVAL FOR MAINS 12" & LESS WITH THRUST CALCS PROVIDED TO CITY.

REVISION	APPROVED	DATE	CITY OF COEUR d'ALENE STANDARD DRAWING	APPROVED BY:	DATE:
				<b>THRUST BLOCKING</b>	<i>Chris Bodley</i>
			CITY ENGINEER, PE 10604		DATE:
				DWG NO.	W-9