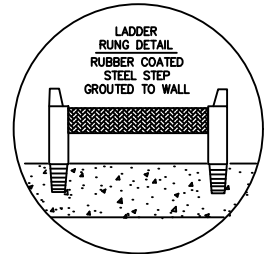
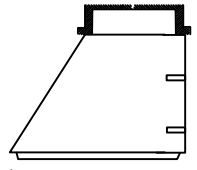
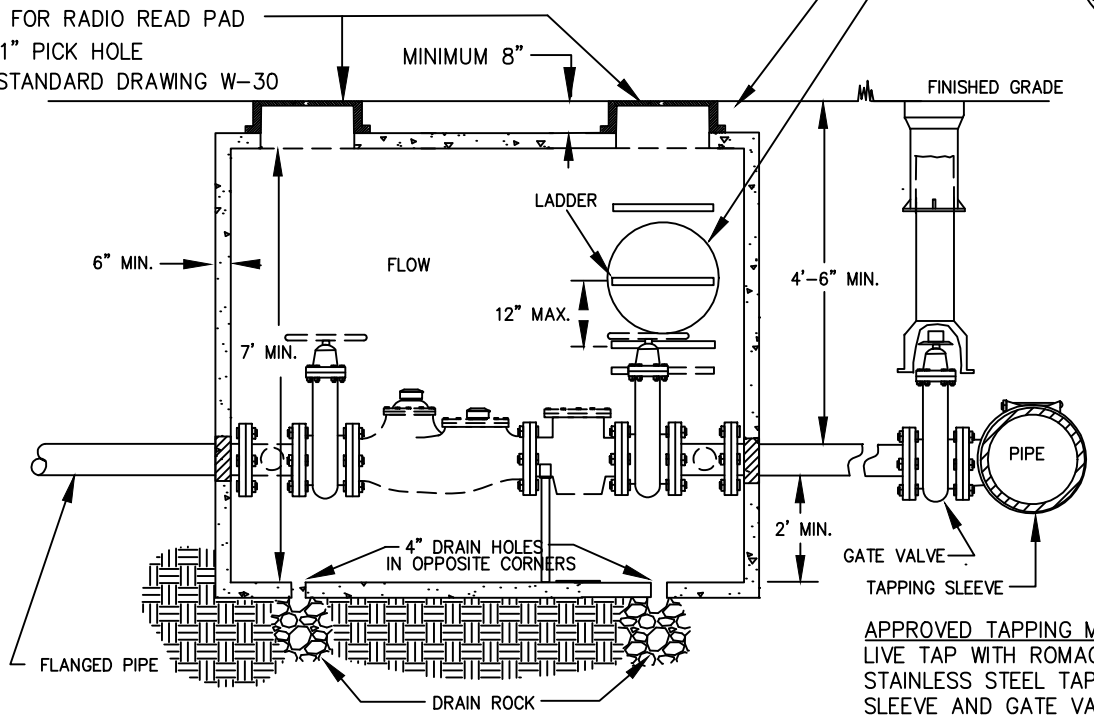


OPTIONAL 24" HIGH OFFSET MANHOLE CONE W/ STEPS FOR BURY DEPTH OVER 30".



PLAN VIEW

24" MANHOLE RING AND COVER WITH 2" HOLE FOR RADIO READ PAD AND 1" PICK HOLE SEE STANDARD DRAWING W-30



APPROVED TAPPING METHOD: LIVE TAP WITH ROMAC STAINLESS STEEL TAPPING SLEEVE AND GATE VALVE.

NOTES:

SECTION VIEW

1. VAULT CONSTRUCTION TO BE DESIGNED BASED ON POTENTIAL TRAFFIC LOAD. WILBERT 1914 SERIES VAULT W/ INSIDE DIMENSIONS TO ACCOMMODATE ALL EQUIPMENT AS NOTED BELOW.
2. LENGTH AND WIDTH OF VAULT SHALL ACCOMMODATE EQUIPMENT WITH ADEQUATE CLEARANCE FROM WALLS. MUST HAVE APPROVED WALL MOUNTED LADDER RUNGS WITH RUBBER COATING AS ILLUSTRATED.
3. PIPE SHALL BE RESTRAINED TO LAST MECHANICAL JOINT AT TEE AND SHALL NOT USE THE VAULT WALL FOR THRUST BLOCKING.
4. THE VAULT SHALL HAVE A MINIMUM INTERIOR HEIGHT OF 6'.
5. CONCRETE RISER RINGS IN EXCESS OF 8" HIGH SHALL REQUIRE THE INSTALLATION OF ADDITIONAL STEP(S).
6. VAULT SHALL BE INSTALLED LEVEL AND PLUMB TO PROVIDE ADEQUATE DRAINAGE TO 4" DRAIN HOLES.
7. PIPE HOLES SHALL BE CAST MIN 4" LARGER THAN PIPE TO BE USED.

REVISION	APPROVED	DATE	CITY OF COEUR d'ALENE STANDARD DRAWING		APPROVED BY:
			<b>4" &amp; LARGER DOM. SERVICE VAULT SET</b>		 CITY ENGINEER, PE 10604
					DWG NO. <span style="float: right;">W-17</span>