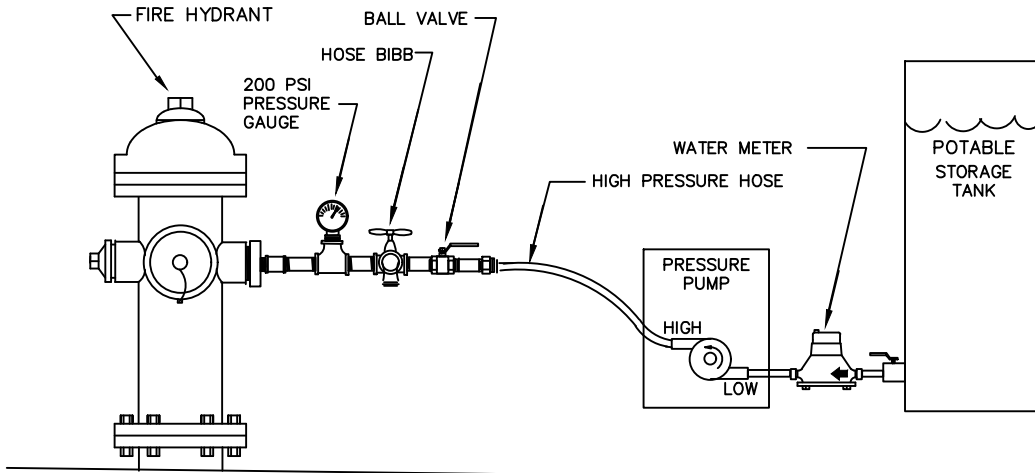
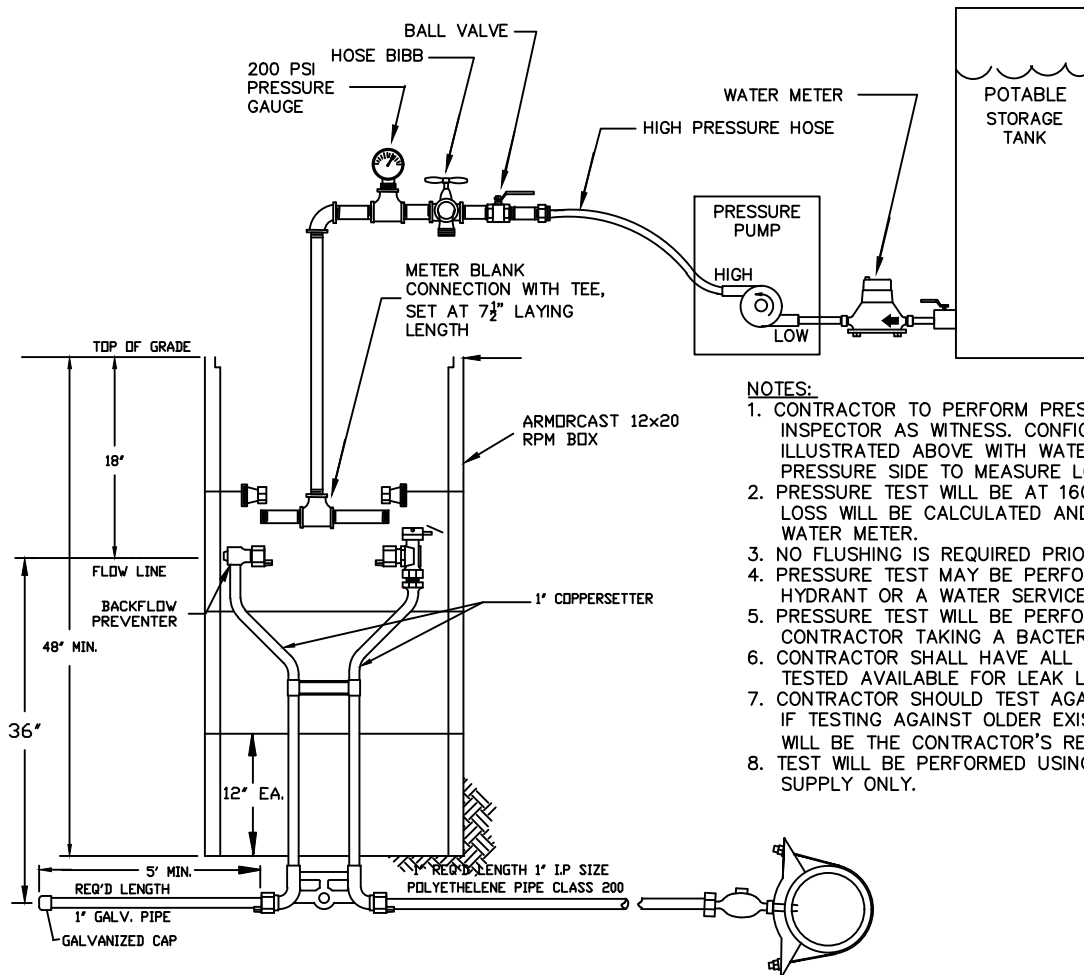


PRESSURE TEST THROUGH FIRE HYDRANT



PRESSURE TEST THROUGH COPPERSETTER



**NOTES:**

1. CONTRACTOR TO PERFORM PRESSURE TEST WITH CITY INSPECTOR AS WITNESS. CONFIGURATION MUST BE AS ILLUSTRATED ABOVE WITH WATER METER ON LOW PRESSURE SIDE TO MEASURE LOSS.
2. PRESSURE TEST WILL BE AT 160 PSI FOR 2 HOURS. LOSS WILL BE CALCULATED AND MEASURED WITH A WATER METER.
3. NO FLUSHING IS REQUIRED PRIOR TO PRESSURE TEST.
4. PRESSURE TEST MAY BE PERFORMED THROUGH A FIRE HYDRANT OR A WATER SERVICE COPPERSETTER.
5. PRESSURE TEST WILL BE PERFORMED PRIOR TO CONTRACTOR TAKING A BACTERIA SAMPLE.
6. CONTRACTOR SHALL HAVE ALL FOOTAGE OF PIPE TO BE TESTED AVAILABLE FOR LEAK LOSS CALCULATIONS.
7. CONTRACTOR SHOULD TEST AGAINST NEW VALVES ONLY. IF TESTING AGAINST OLDER EXISTING VALVES, FAILURE WILL BE THE CONTRACTOR'S RESPONSIBILITY.
8. TEST WILL BE PERFORMED USING A POTABLE WATER SUPPLY ONLY.

REVISION	APPROVED	DATE

CITY OF COEUR d'ALENE STANDARD DRAWING

**APPROVED PRESSURE TESTING METHOD**

APPROVED BY:

*Chris Busby* 4/13/18  
CITY ENGINEER, PE 10804 DATE:

DWG NO.

W-35