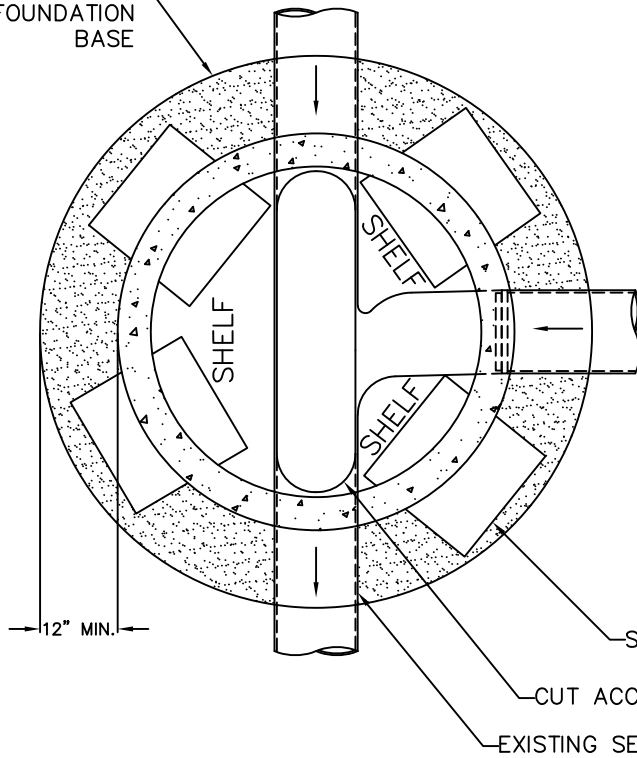


CONCRETE FOUNDATION BASE



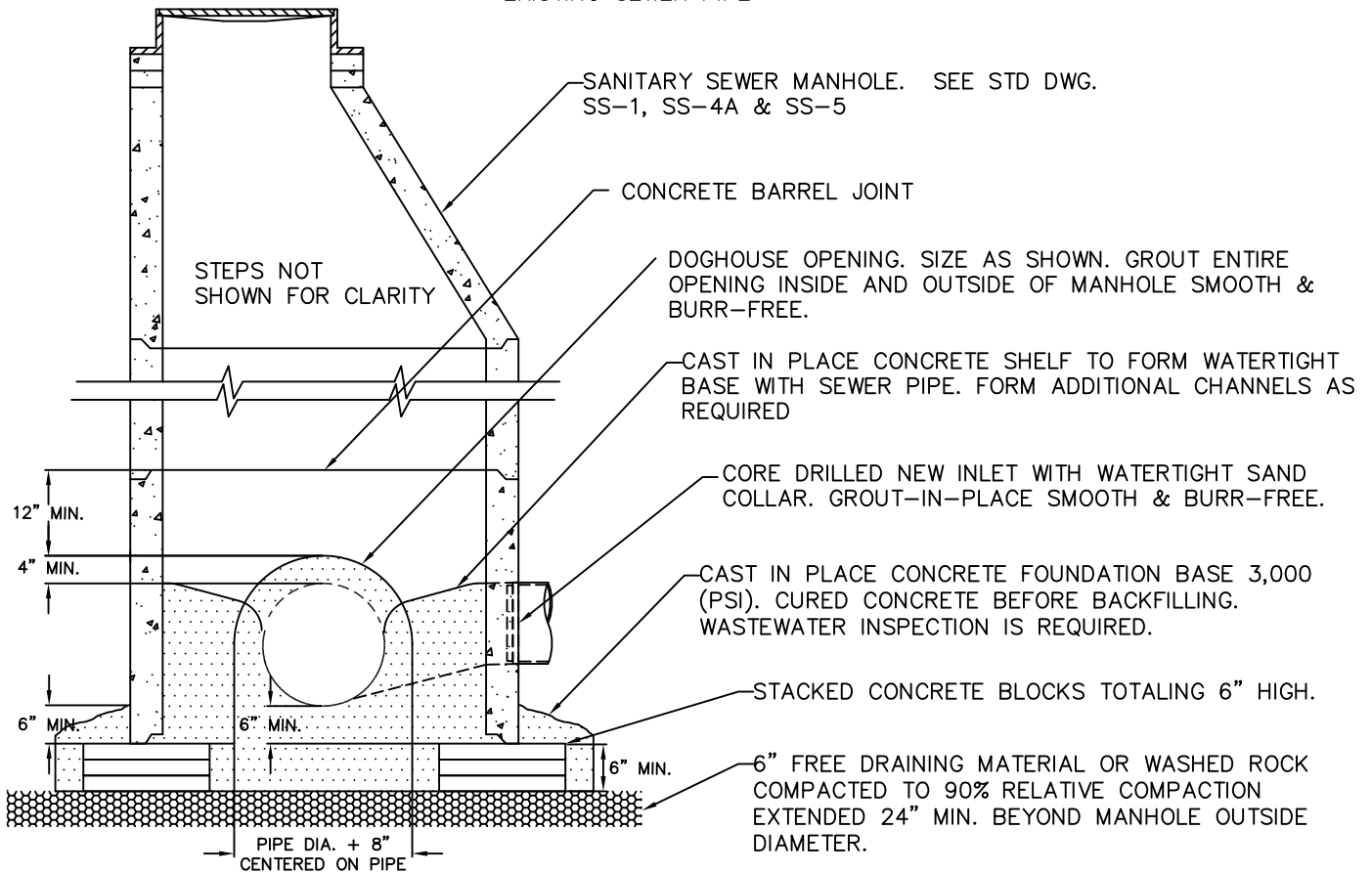
## NOTES THIS DETAIL:

1. DOGHOUSE MANHOLES ARE ONLY USED WHEN PLACING A NEW MANHOLE DIRECTLY OVER AN EXISTING ACTIVE SEWER PIPE AND MUST BE PRE-APPROVED BY THE WASTEWATER UTILITY.
2. DOGHOUSE MANHOLE SHALL BE CENTERED OVER EXISTING SEWER PIPE AND MUST MAINTAIN A 24" MINIMUM SEPARATION FROM THE NEAREST PIPE JOINT OR FITTING.
3. PRIOR TO CUTTING AN ACCESS OPENING INTO THE EXISTING SEWER PIPE, A PASSING HYDROSTATIC WATER TEST MAY BE REQUIRED BY THE WASTEWATER UTILITY. HYDROSTATIC TEST SHALL CONFORM TO I.S.P.W.C. SPECIFICATIONS (LATEST REVISION).
4. CUT ACCESS OPENING INTO TOP OF EXISTING SEWER PIPE BOTH SIDES TO MATCH FLUSH WITH MANHOLE SHELF. REMOVE ALL SHARP OR IRREGULAR EDGES AND DISPOSE OF REMOVED SECTION OF PIPE. WASTEWATER UTILITY INSPECTION IS REQUIRED.

STACKED CONCRETE BLOCKS (TYP.)

CUT ACCESS OPENING

EXISTING SEWER PIPE



SANITARY SEWER MANHOLE. SEE STD DWG. SS-1, SS-4A & SS-5

CONCRETE BARREL JOINT

STEPS NOT SHOWN FOR CLARITY

DOGHOUSE OPENING. SIZE AS SHOWN. GROUT ENTIRE OPENING INSIDE AND OUTSIDE OF MANHOLE SMOOTH & BURR-FREE.

CAST IN PLACE CONCRETE SHELF TO FORM WATERTIGHT BASE WITH SEWER PIPE. FORM ADDITIONAL CHANNELS AS REQUIRED

CORE DRILLED NEW INLET WITH WATERTIGHT SAND COLLAR. GROUT-IN-PLACE SMOOTH & BURR-FREE.

CAST IN PLACE CONCRETE FOUNDATION BASE 3,000 (PSI). CURED CONCRETE BEFORE BACKFILLING. WASTEWATER INSPECTION IS REQUIRED.

STACKED CONCRETE BLOCKS TOTALING 6" HIGH.

6" FREE DRAINING MATERIAL OR WASHED ROCK COMPACTED TO 90% RELATIVE COMPACTION EXTENDED 24" MIN. BEYOND MANHOLE OUTSIDE DIAMETER.

PIPE DIA. + 8" CENTERED ON PIPE



CITY OF COEUR D'ALENE STANDARD DRAWING

**DOGHOUSE MANHOLE**

APPROVED BY:

*Chris Boddy*  
CITY ENGINEER, PE 10804

10/1/24  
DATE:

DWG NO.

SS-3