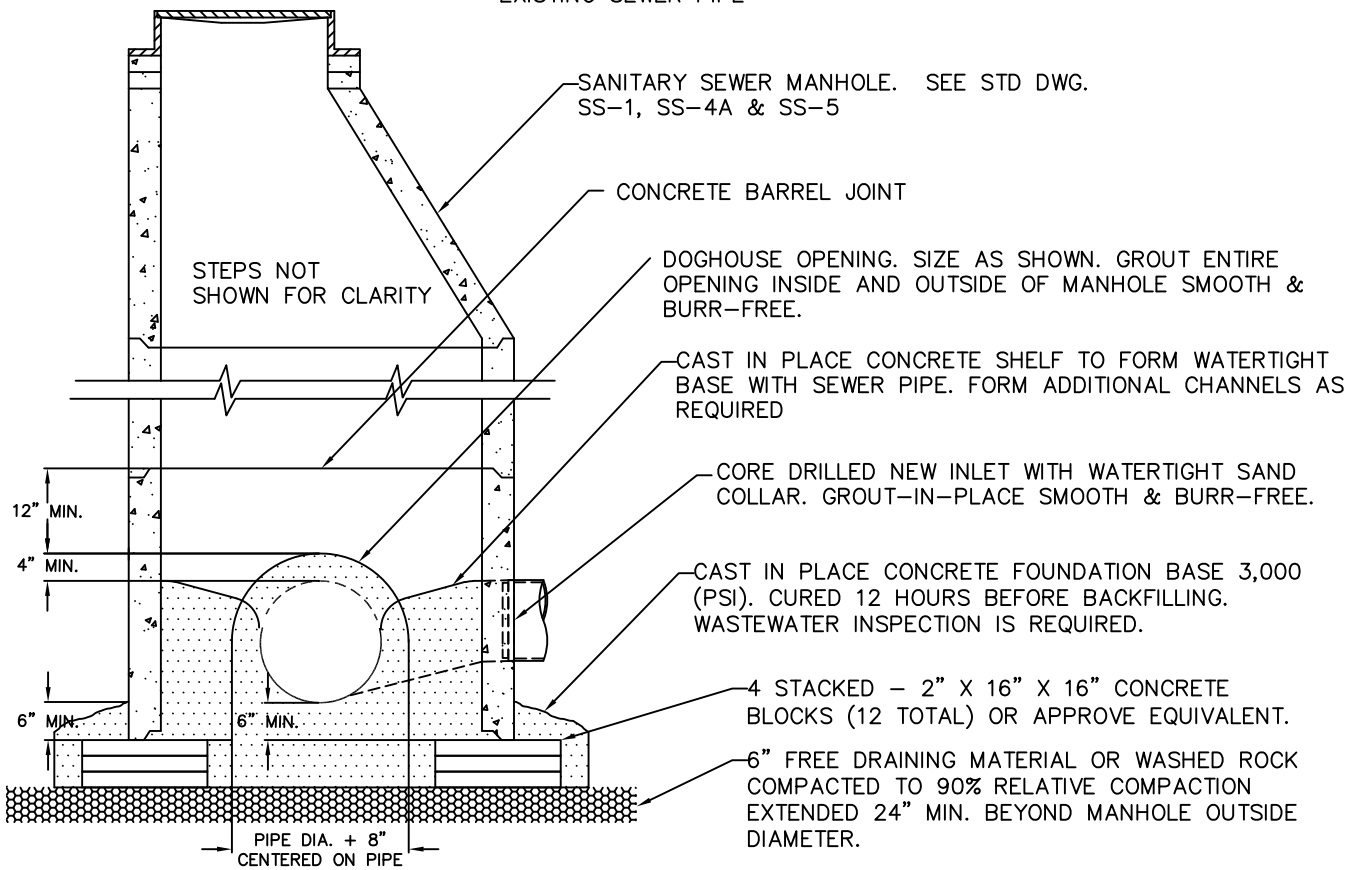
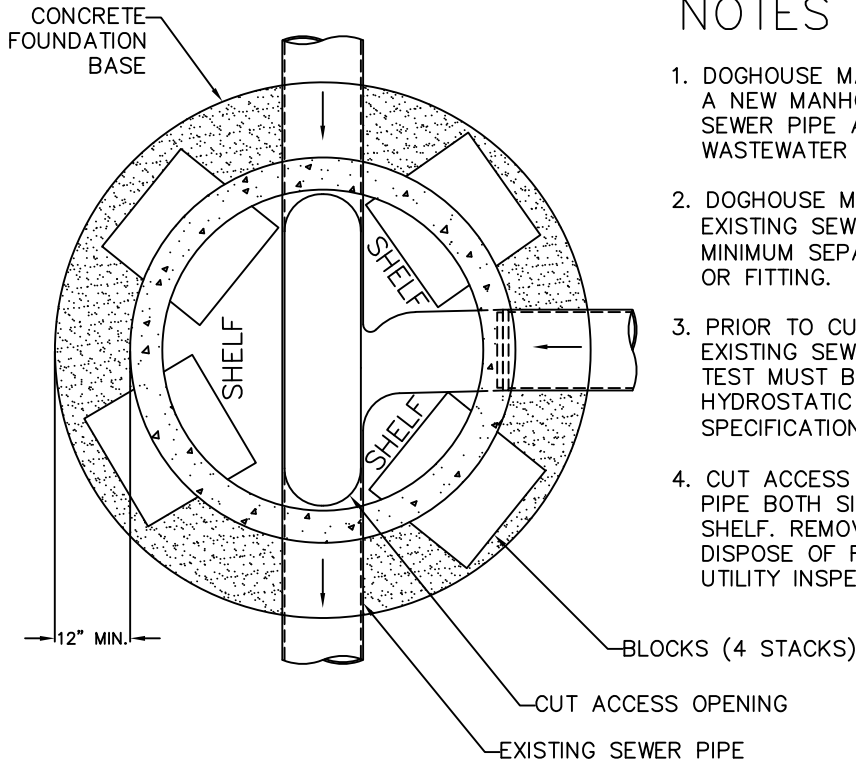


NOTES THIS DETAIL:

1. DOGHOUSE MANHOLES ARE ONLY USED WHEN PLACING A NEW MANHOLE DIRECTLY OVER AN EXISTING ACTIVE SEWER PIPE AND MUST BE PRE-APPROVED BY THE WASTEWATER UTILITY.
2. DOGHOUSE MANHOLE SHALL BE CENTERED OVER EXISTING SEWER PIPE AND MUST MAINTAIN A 24" MINIMUM SEPARATION FROM THE NEAREST PIPE JOINT OR FITTING.
3. PRIOR TO CUTTING AN ACCESS OPENING INTO THE EXISTING SEWER PIPE, A PASSING HYDROSTATIC WATER TEST MUST BE APPROVED BY THE WASTEWATER UTILITY. HYDROSTATIC TEST SHALL CONFORM TO I.S.P.W.C. SPECIFICATIONS (LATEST REVISION).
4. CUT ACCESS OPENING INTO TOP OF EXISTING SEWER PIPE BOTH SIDES TO MATCH FLUSH WITH MANHOLE SHELF. REMOVE ALL SHARP OR IRREGULAR EDGES AND DISPOSE OF REMOVED SECTION OF PIPE. WASTEWATER UTILITY INSPECTION IS REQUIRED.



REVISION	APPROVED	DATE	CITY OF COEUR d'ALENE STANDARD DRAWING	APPROVED BY:
			DOGHOUSE MANHOLE	<i>Chris Bosley</i> 7/2/18
				CITY ENGINEER, PE 10804 DATE:
			DWG NO.	SS-3