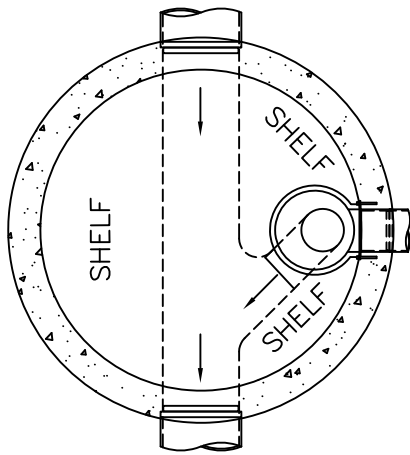
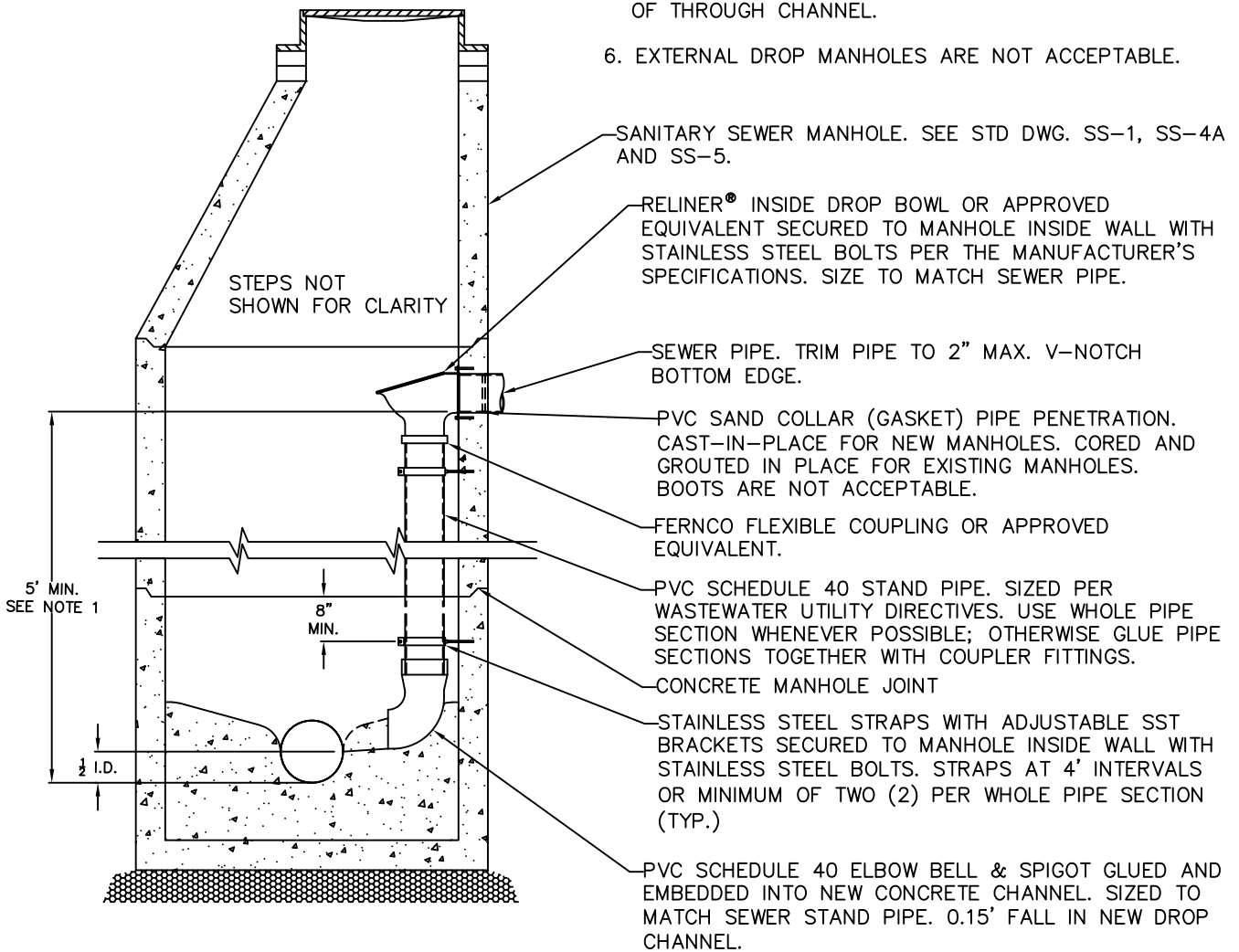


NOTES THIS DETAIL:



1. INTERIOR DROP MANHOLES WILL ONLY BE ALLOWED FOR GRAVITY SEWER PIPES (NON-PRESSURIZED FLOW) REQUIRING VERTICAL DROP STRUCTURES FIVE FEET (5') OR GREATER.
2. ALL STAINLESS STEEL ADJUSTABLE BRACKETS SHALL BE PLACED 8" MINIMUM SEPARATION FROM ANY JOINT OR OTHER PIPE PENETRATIONS WITHIN MANHOLE.
3. ORIENTATE DROP BOWL AND STANDPIPE STRUCTURE PLACEMENT TO AVOID OBSTRUCTION WITH MANHOLE STEPS. ROTATE MANHOLE CONE IF NECESSARY.
4. ALL FASTENING HARDWARE SHALL BE STAINLESS STEEL 300 SERIES OR BETTER.
5. CHANNEL AT BASE OF DROP STRUCTURE SHALL BE FORMED WITH 0.15' FALL INTO CONCRETE BENCH AND MATCH NEW OUTLET CHANNEL INVERT TO SPRING LINE OF THROUGH CHANNEL.
6. EXTERNAL DROP MANHOLES ARE NOT ACCEPTABLE.



REVISION	APPROVED	DATE	CITY OF COEUR d'ALENE STANDARD DRAWING	APPROVED BY:	
				<h2>INTERNAL DROP SEWER MANHOLE</h2>	 CITY ENGINEER, PE 10804
			DWG NO.		SS-2