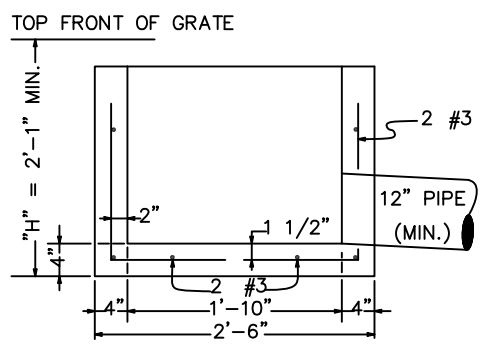
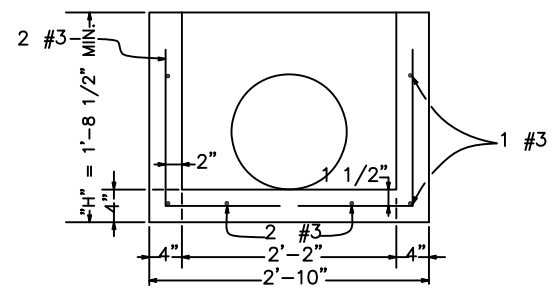


PLAN

PIPE Ø	"H"
12"	1'-8 1/2"
15"	2'-0"
18"	2'-3"
21"	2'-6"
24"	2'-9"



SECTION A-A



SECTION B-B

PRECAST UNIT

GENERAL NOTES

- CONCRETE INLET SHALL BE CONSTRUCTED IN ACCORDANCE WITH ASTM C 478 (AASHTO M 199) & ASTM C 890 UNLESS OTHERWISE SHOWN ON PLANS OR NOTED IN THE PROJECT SPECIAL PROVISIONS.
- REINFORCING STEEL SHALL BE GRADE 40 OR GRADE 60.
- CONCRETE INLETS SHALL BE SET ON A COMPACTED OR UNDISTURBED LEVEL FOUNDATION.
- AS AN ACCEPTABLE ALTERNATE TO REBAR, WELDED WIRE FABRIC HAVING A MINIMUM AREA OF .12 SQUARE INCHES PER FOOT MAY BE USED. WELDED WIRE FABRIC SHALL COMPLY TO ASTM A 497 (AASHTO M 221). WIRE FABRIC SHALL NOT BE PLACED IN THE KNOCKOUTS.
- "H" SHALL BE SHOWN ON CONSTRUCTION PLANS.
- INLET PIPE SHALL BE GROUTED INTO CONCRETE INLET.

REVISION	APPROVED	DATE	CITY OF COEUR d'ALENE STANDARD DRAWING	APPROVED BY:
			CURB INLET BOX TYPE 1	<i>Chris Bosley</i> CITY ENGINEER, PE 10804
				DWG NO. SD-9

6/20/18
DATE: