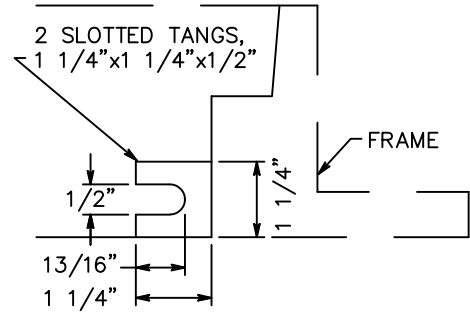
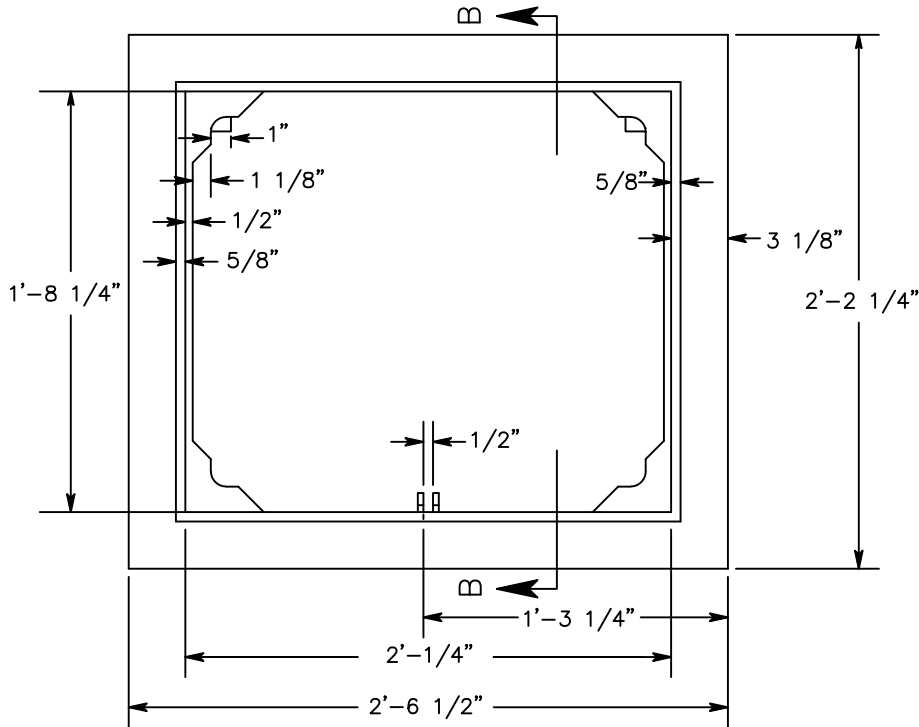


SECTION B-B



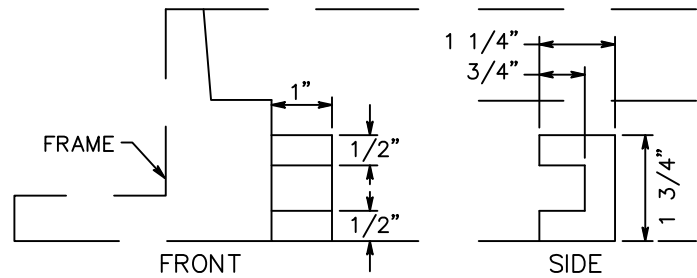
TANG DETAIL



FRAME - TYPE 1

GENERAL NOTES

1. FRAME SHALL BE GRAY IRON CONFORMING TO A.S.T.M. A48-90, GRADE 30. THE GRATE SHALL BE DUCTILE IRON CONFORMING TO A.S.T.M. A536-84, GRADE 80-55-06.
2. USE WITH CATCH BASIN AND CONCRETE INLET TYPE 1, SEE STD. DRAWING SD-1.
3. FIT TOLERANCE SHALL BE $1/8" \pm$.
4. WELDING IS NOT PERMITTED.
5. FOR GRATE DETAIL SEE STD. DRAWING SD-4.



SLOT DETAIL



CITY OF COEUR D'ALENE STANDARD DRAWING

**GRATE FRAME
TYPE 1**

APPROVED BY:

Chris Bosley
CITY ENGINEER, PE 10804

10/1/24
DATE:

DWG NO.

SD-2