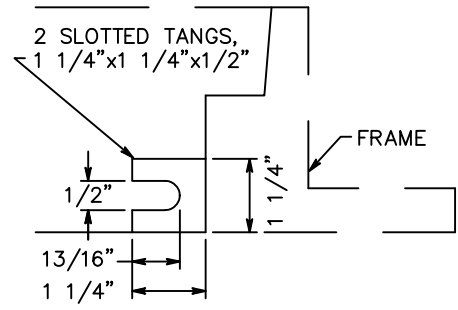
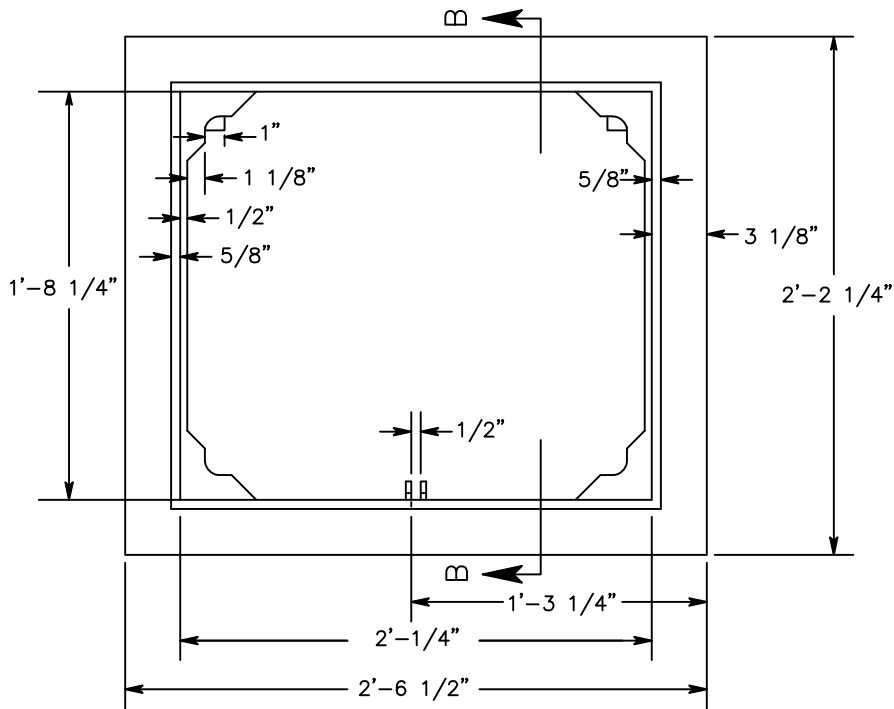


SECTION B-B



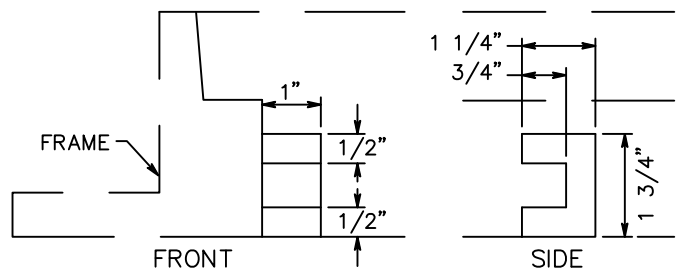
TANG DETAIL



FRAME - TYPE 1

GENERAL NOTES

1. FRAME SHALL BE GRAY IRON CONFORMING TO A.S.T.M. A48-90, GRADE 30. THE GRATE SHALL BE DUCTILE IRON CONFORMING TO A.S.T.M. A536-84, GRADE 80-55-06.
2. USE WITH CATCH BASIN AND CONCRETE INLET TYPE 1, SEE STD. DRAWING SD-1.
3. FIT TOLERANCE SHALL BE 1/8"±.
4. WELDING IS NOT PERMITTED.
5. FOR GRATE DETAIL SEE STD. DRAWING SD-4.



SLOT DETAIL

REVISION	APPROVED	DATE	CITY OF COEUR d'ALENE STANDARD DRAWING	APPROVED BY:
			GRATE FRAME TYPE 1	<i>Chris Bodley</i> CITY ENGINEER, PE 10804
				DWG NO. SD-2
				DATE: 6/20/18