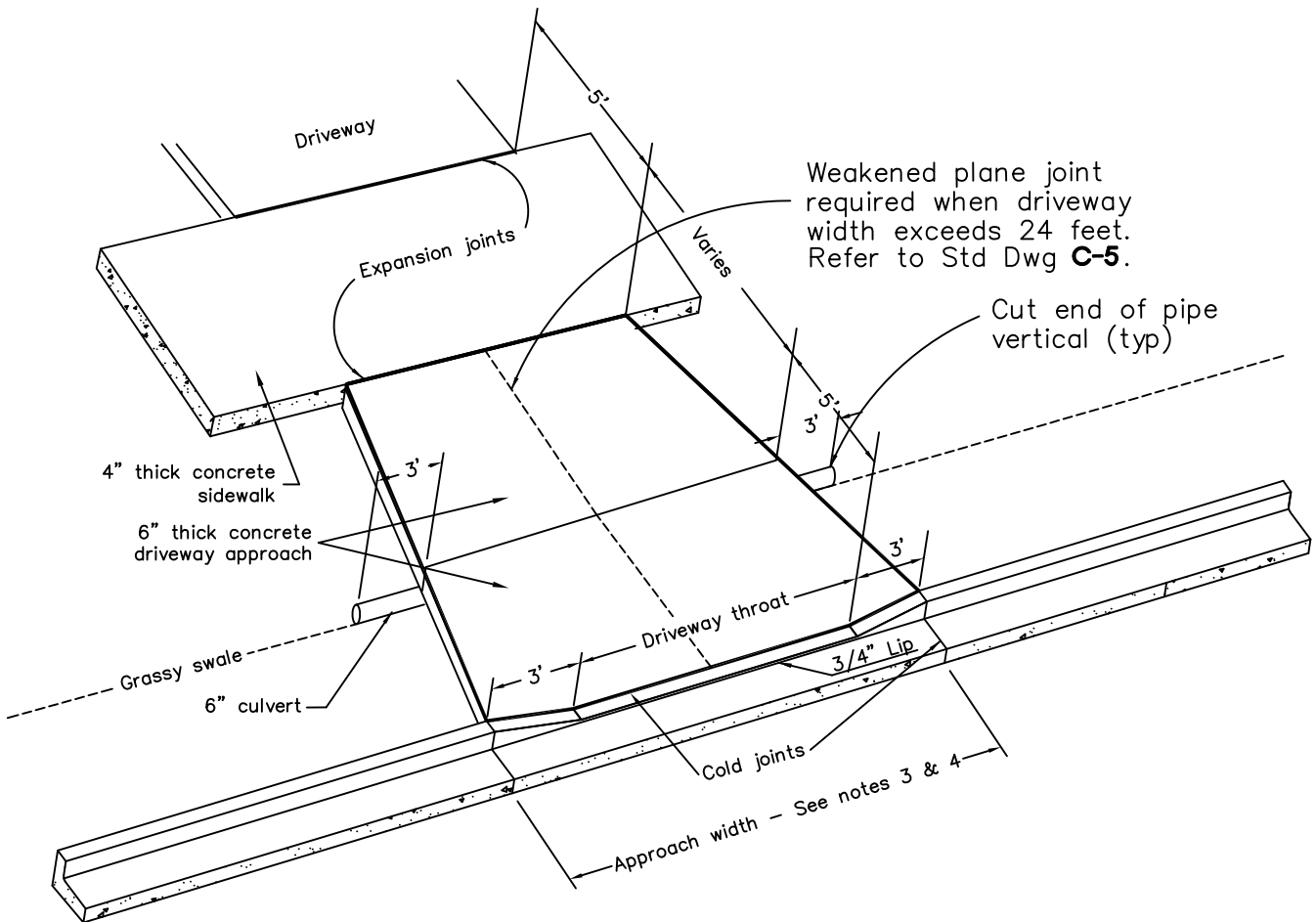


STANDARD CURB AND GUTTER SECTION

ROLLED CURB AND GUTTER SECTION



NOTES:

1. Concrete shall be a minimum 28 day compressive strength of 4000 PSI.
2. Culvert material shall be Schedule 40 or equal, with smooth interior wall.
3. Residential approach width: 16' min - 36' max.
4. Commercial approach width: 18' min - 40' max.
5. See Standard Drawing C-13 for driveway location.
6. See Standard Drawing SD-7 for grassy swale detail.

Not to Scale

REVISION	APPROVED	DATE	CITY OF COEUR d'ALENE STANDARD DRAWING	APPROVED BY:	
				DRIVEWAY APPROACH WITH CULVERT	 CITY ENGINEER, PE 10804
			DWG NO.		C-9