



**A Joint Workshop  
COEUR D'ALENE CITY COUNCIL  
and the  
PARKS & RECREATION COMMISSION  
To be held in the Old City Hall Council Chambers**

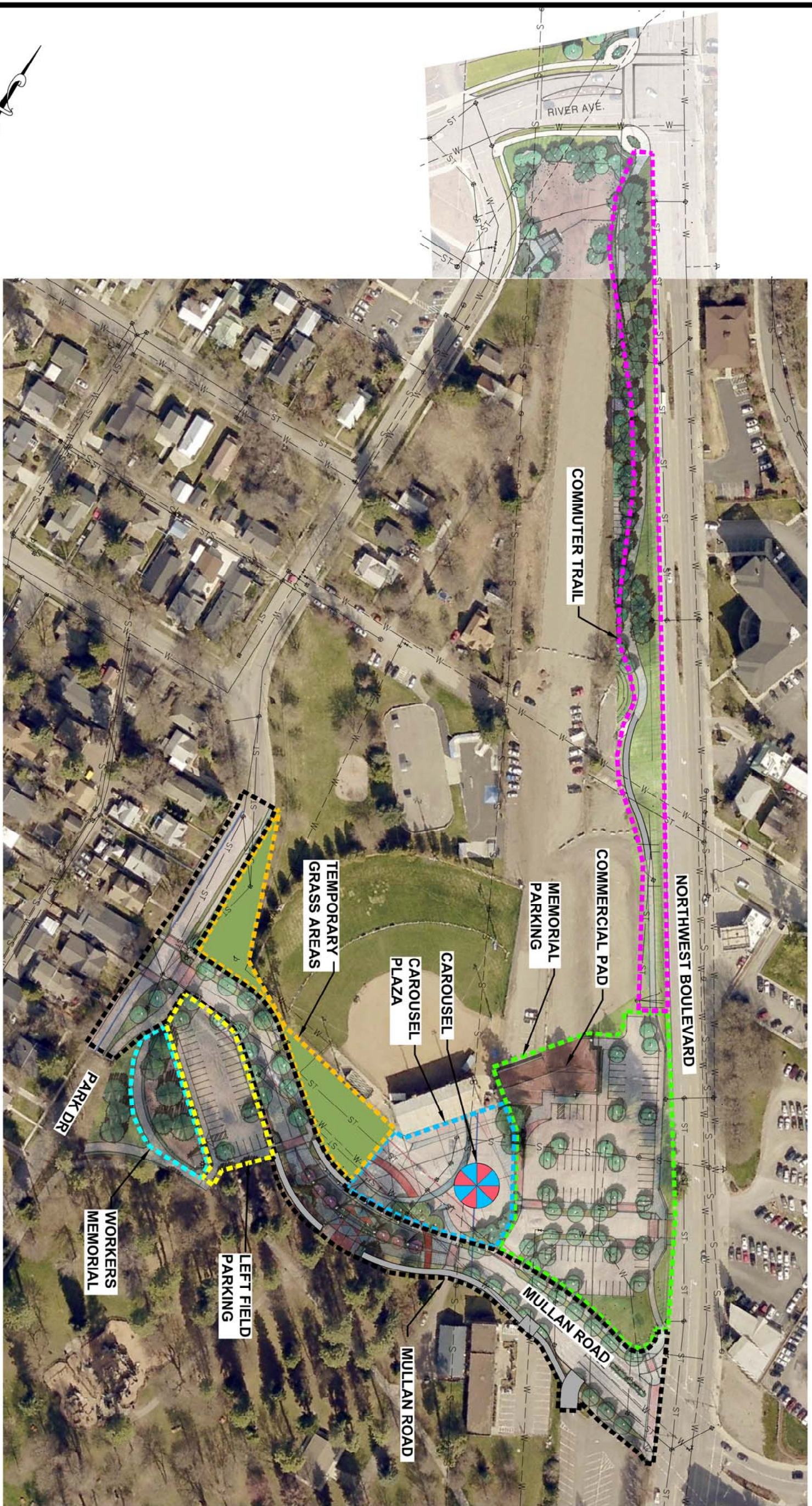
**AGENDA**

July 9, 2015

3:00 P.M.

1. Call to Order
2. Introduction – Steve Anthony
3. BLM History – Janna Paronto, Bureau of Land Management
4. BLM Master Plan Discussion – Phil Boyd, Welch-Comer Engineers
5. 4-Corners Discussion
6. Adjournment: Recess to July 14, 2015, at 1:00 p.m., in the Library Community Room (702 Front Avenue) for a Workshop regarding the Fiscal Year 2015-2016 annual appropriation budget.

**LIMITS OF FOUR CORNERS/BLM CORRIDOR  
CONCEPT PLAN TO BE CONSTRUCTED**



- NOTES:**
1. THE MULLAN ROAD ALIGNMENT IS CONCEPTUAL AND WILL BE ADJUSTED DURING DESIGN TO AVOID TREES AND OTHER EXISTING FEATURES AS DIRECTED BY CITY COUNCIL.
  2. GRASS AREAS ARE TEMPORARY AND WILL BE REPLACED WITH RECONSTRUCTION OF MEMORIAL FIELD AND THE ASSOCIATED PLAZA AREA.

CITY OF COEUR D'ALENE  
**MULLAN ROAD  
RECONSTRUCTION**

OVERVIEW

**WELCH-COMER**  
ENGINEERS | SURVEYORS

www.welchcomer.com 208-664-9382  
350 E. Kathleen Ave. (toll free) 877-815-5672  
Coeur d'Alene, ID 83815 (fax) 208-664-5946

NO.	DATE	REVISION DESCRIPTION	BY

**PRELIMINARY  
NOT FOR  
CONSTRUCTION**

Copyright 2015  
Welch-Comer & Associates, Inc.  
This document, and ideas and designs incorporated herein, as an instrument of professional service, is the property of Welch-Comer & Associates, Inc., and is not to be used in whole or in part for any other project without the written authorization of Welch-Comer & Associates, Inc.

PROJECT NO.: 41181  
DESIGNED BY: CWB/PFB  
DRAWN BY: CWB/SDS/TT  
CHECKED BY:  
DWG NAME: MULLAN 2016\_02.DWG  
DATE: 05-26-2015  
SHEET NO.: